

Quick Installation Guide

Ver.1.0

1. Getting Started

1.1 Package Contents

IP Camera
Power Adaptor
CD
Accessories

1.2 Physical Description

1) Appearance and interface of IP camera

Wired/Wireless Box IP camera



Wired/Wireless Dome IP camera



IP Camera Quick Installation Guide

Vandal proof Dome IP camera



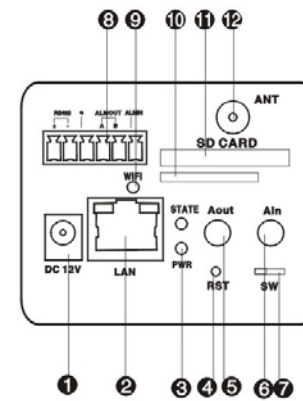
Wired/Wireless Pan/tilt IP camera



2) Interface introduce

Difference type IP camera, difference interface

Interface example :



IP Camera Quick Installation Guide

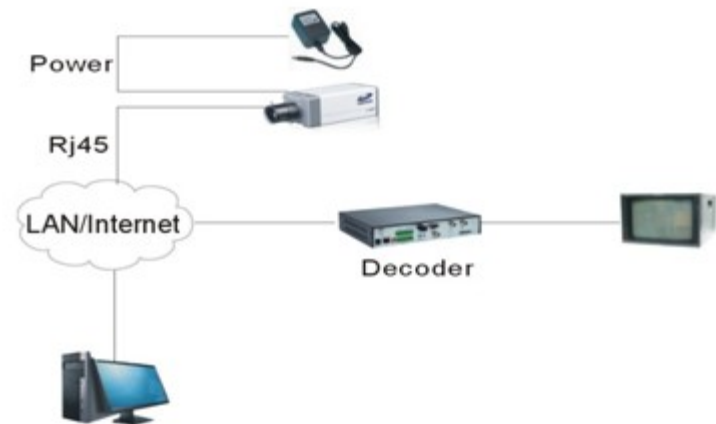
- 1、 **【DC 12V】** : Power input
- 2、 **【LAN】** : RJ45 interface
- 3、 **【State】** : Network connection, yellow light turn on, Green light flash
【PWR】 : Power turn on ,red light work
- 4、 **【RST】** : Factory setting
- 5、 **【Aout】** : Audio output
- 6、 **【Ain】** : Audio input
- 7、 **【SW】** : Factory update
- 8、 **【Alarm IN】** : Alarm input
【G】 : Grounding
【Alarm OUT】 : Alarm output
【RS485】 : Connect PTZ device to IP camera

IP Camera Quick Installation Guide

- 9、【Wifi】：Wifi status light , yellow light turn on, Green light flash after connection success
 - 10、【SIM】：SIM card slot
 - 11、【SD CARD】：SD card slot
 - 12、【ANT】：Wireless antenna
- The steps of reset:
- 1) Disconnect power
 - 2) Press RST button
 - ⚠ Keep press RST button about 5-8seconds
 - 3) Reconnect power
 - 4) The State light turn on
 - 5) A sound from relay reset finish, the state light flash

2. Basic Connection

Follow the procedures below to connect the IP camera to the respective apparatuses.



3. Quick Tour

This section guides you with a quick tour on this IP camera.

3.1 Configure IP camera

Make sure network environment

Default IP address of IP camera is 192.168.1.19. Please make sure IP camera and your PC are on the same network segment before running the installation.

To access the IP camera, the IP address of the PC should match the address below.

IP Address: 192.168.1.xxx

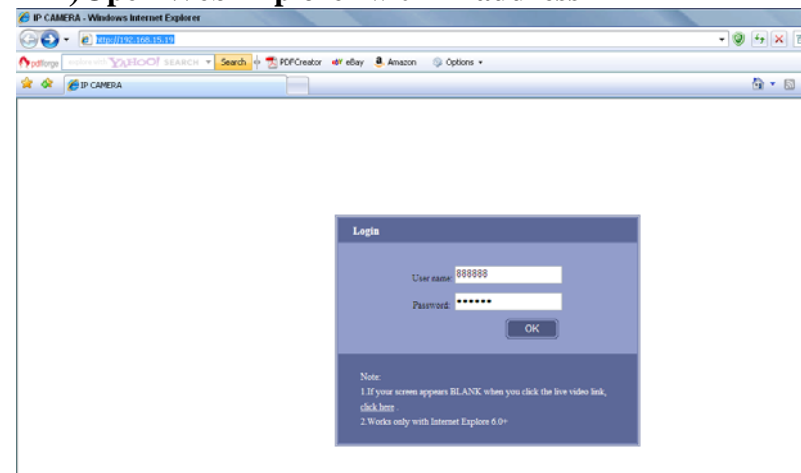
Subnet Mask: 255.255.255.0

NOTE: xxx should be a number from 1 to 254 except 19, which is used by the IP camera. Please also make sure that no two equipments use the same IP address in the same network.

IP Camera Quick Installation Guide

3.2 There are two ways to view the IP camera

1) Open Web Explorer with IP address



NOTE: The default IP address of IP camera is 192.168.1.19
Default user name is 888888 , password is 888888, and click “ok”.

IP Camera Quick Installation Guide

Preview the video



Note: If you can't view the video, please do as follows:
Web browser-Tool-Internet optional-Security-Custom level- Enable active-X

IP Camera Quick Installation Guide

Then click here to download ActiveX

If your screen appears BLANK when you click the live video link, [click here](#)

2) View the camera by search tool



CD—Tools—Search IP and Player-- Search IP and Player Test
Then click “Search”, all IP cameras in your LAN will show on the list



Click “open in IE” to view the camera on web browser

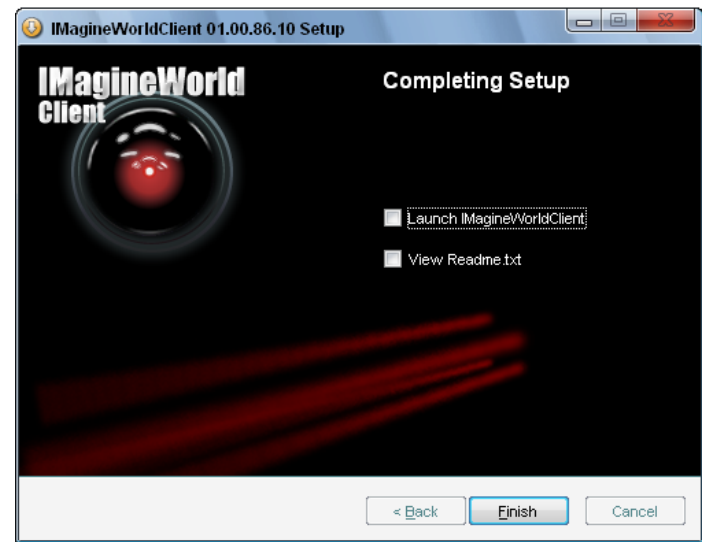
3.3 View IP camera on IImagineWorldClient

- 1) Installation of IImagineWorldclient (Software From CD),choose the language to launch



IP Camera Quick Installation Guide

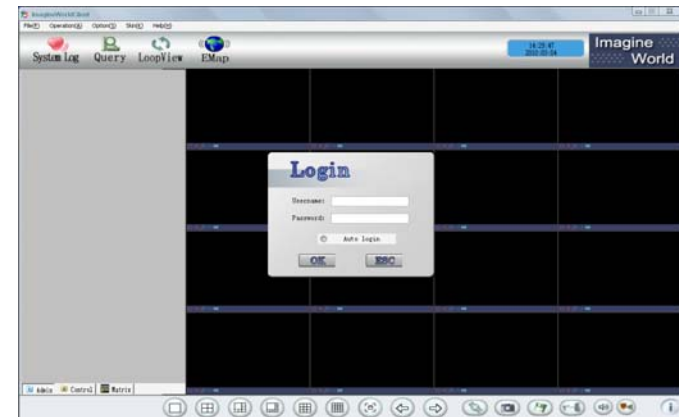
Then step by step to finish the installation



IP Camera Quick Installation Guide

2) Configuration of IP camera on IImagineWorldclient

Enter into IImagineWorldClient

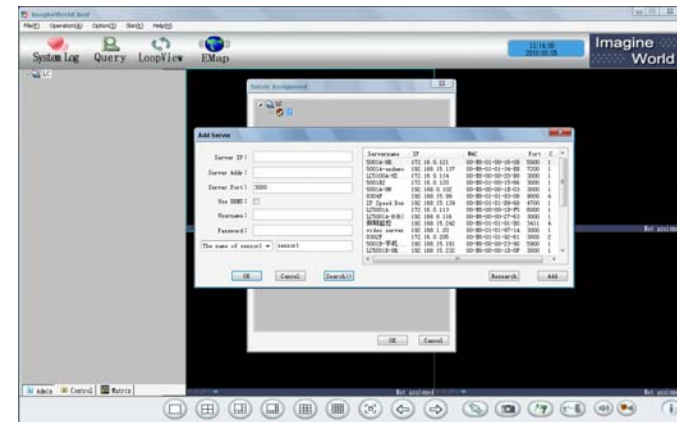


The default username: admin, password: null

IP Camera Quick Installation Guide

The steps of adding IP camera:

Option-server management-add project-add group-add server



Click “search” to search IP camera, then double click IP camera ,it will fill the parameter on the left list ,finish this setting:

IP Camera Quick Installation Guide

The server IP: IP camera name

server addr: IP address

server port: Data port

username: password:

use DDNS, don't select

After you finish it, you can see camera logo on the left, then drag the logo to the right window

Add another IP cameras at the same way

IP Camera Quick Installation Guide

3)View IP cameras on IImagineWorldClient



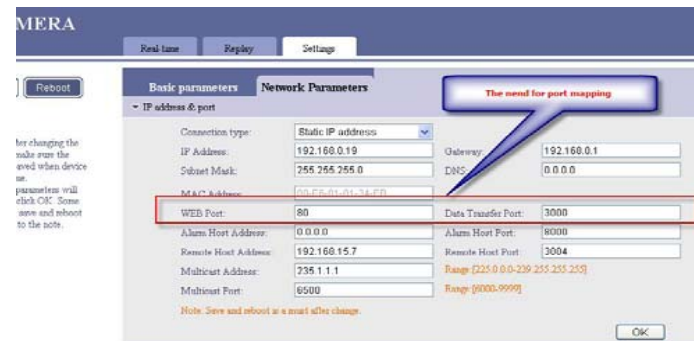
4. WAN Access

It is necessary to do port mapping when access IP camera from WAN.

1. Checking the IP camera's port.

There are two ways to check them

- 1) Web Browser—Setting—Network parameters—IP address & Port—Web port & Data Transfer port



IP Camera Quick Installation Guide

- 2) Software: Imagineworldclient---option---Remote server setting—Network Parameters--web port & local port

The screenshot displays the configuration interface for an IP camera, titled "Get parameters successful.". The interface is divided into a left sidebar with a tree view of configuration categories and a main right pane for editing parameters. The "Network Param" category is selected in the sidebar. The main pane contains various network-related settings:

- IP address: 192.168.0.19
- Netmask: 255.255.255.0
- DNS address: 202.56.215.6
- Gateway: 192.168.0.201
- Multicast address: 235.1.1.1
- Multicast port: 5500
- Local port: 3000 (highlighted with a red box)
- WEB port: 80 (highlighted with a red box)
- MAC: 00-EG-01-01-5D-8F
- PPPOE: Don't start
- PPPOE username: (empty)
- PPPOE password: (empty)
- DHCP: Don't start
- UPNP: Don't start
- Start DDNS: Start
- DDNS server address: 202.56.215.6
- DDNS server port: 8080
- DDNS provider: My DDNS[new]
- DDNS username: (empty)
- DDNS password: (empty)
- DDNS domain name: (empty)
- Alarm host address: 0.0.0.0
- Alarm host port: 8000
- Remote host address: 0.0.0.0
- Remote host port: 3004

Annotations on the screenshot include a blue callout bubble pointing to the "Network Param" category in the sidebar with the text "Click here", and another blue callout bubble pointing to the "Local port" and "WEB port" fields with the text "the need for port mapping".

IP Camera Quick Installation Guide

These Ports need to be checked:

- 1) Web Port
- 2) Data transfer port (Local port)
- 3) Data control port (Hide port)=Data transfer port +1

For example, The figure 2,

The Local port (Data transfer port) is 3000,

The data control port = Data transfer port +1=3000+1=3001

2、 The Router settings

Do port mapping in the router :

- 1) Transmit rule---virtual server

It is necessary to add the mapping ports into the router list

WEB Port 、 Local Port(Data Transfer Port) and Data control port.

The port setting as follows:

IP Camera Quick Installation Guide

Virtual Servers

ID	Service Port	IP Address	Protocol	Enable
1	3000	192.168.0.19	ALL	<input checked="" type="checkbox"/>
2	3001	192.168.0.19	ALL	<input checked="" type="checkbox"/>
3	80	192.168.0.19	ALL	<input checked="" type="checkbox"/>
4		192.168.0.	ALL	<input type="checkbox"/>
5		192.168.0.	ALL	<input type="checkbox"/>
		192.168.0.	ALL	<input type="checkbox"/>
		192.168.0.	ALL	<input type="checkbox"/>
8		192.168.0.	ALL	<input type="checkbox"/>

Common Service Port: DNS(53) Copy to ID 1

Clear All Save

Virtual Servers Help

Virtual servers can be used for setting services on your LAN. A virtual server as a service port, and all requests for this service port will be redirected to the computer specified by the server IP. It was used for a virtual server must have a reserved IP address because its IP may change when using the DHCP function.

- Service Port** - The numbers of service ports. You can enter a service range of service ports (the form YYY,XXX is Start port, YYY is End port).
- IP Address** - The IP address running the service application.
- Protocol** - The protocol used by the application, either TCP, UDP, or both.
- Enable** - The Enable checkbox for the virtual server entry.
- Common Service Port** - Some services already exist in the list.

To setup a virtual server entry:

- Select the service you want to setup.

Mapping finished. You can check the WAN IP address from Router Status

IP Camera Quick Installation Guide

The screenshot shows the TP-LINK Cable/DSL Router status page. The left sidebar contains a navigation menu with the following items: Status, Basic Settings, Quick Setup, Network, Advanced Settings, DHCP, Forwarding, Security, Static Routing, Maintenance, and System Tools. The main content area is titled "Router Status" and displays the following information:

LAN

- MAC Address: 00-14-78-52-AF-18
- IP Address: 192.168.0.201
- Subnet Mask: 255.255.255.0

WAN

- MAC Address: 00-14-78-52-AF-19
- IP Address: 122.160.1.106 (Static IP)
- Subnet Mask: 255.255.255.0
- Default Gateway: 122.160.1.1
- DNS Server: 202.56.215.6, 202.56.230.6

Traffic Statistics

	Received	Sent
Bytes:	28631588	10219819
Packets:	49583	28857

Annotations on the screenshot include a blue callout box labeled "Click here" pointing to the "Status" menu item, and another blue callout box labeled "Public network IP" pointing to the WAN IP address field.

Now you can visit the IP camera remotely through IP address and WEB port

IP Camera Quick Installation Guide

For example :

The WAN IP address :122.160.1.106

The WEB port:80

So visiting IP camera in WAN should be :

http:// 122.160.1.106:80

If you can't access to IP camera remotely, Please check the port which you mapped in the router, make sure there is no port conflict

5. Check network connection

Ping IP address and WEB port , Data Transfer Port, Data control port to check if the network connection is success

Ping WAN IP address: Ping 122.160.1.106

```
Microsoft Windows XP [版本 5.1.2600]
(C) 版权所有 1985-2001 Microsoft Corp.

C:\Documents and Settings\Administrator>ping 122.160.1.106

Pinging 122.160.1.106 with 32 bytes of data:

Reply from 122.160.1.106: bytes=32 time=351ms TTL=49
Reply from 122.160.1.106: bytes=32 time=351ms TTL=49
Reply from 122.160.1.106: bytes=32 time=351ms TTL=49
Reply from 122.160.1.106: bytes=32 time=350ms TTL=49

Ping statistics for 122.160.1.106:
    Packets: Sent = 4, Received = 4, Lost = 0 (0% loss),
Approximate round trip times in milli-seconds:
    Minimum = 350ms, Maximum = 351ms, Average = 350ms
```

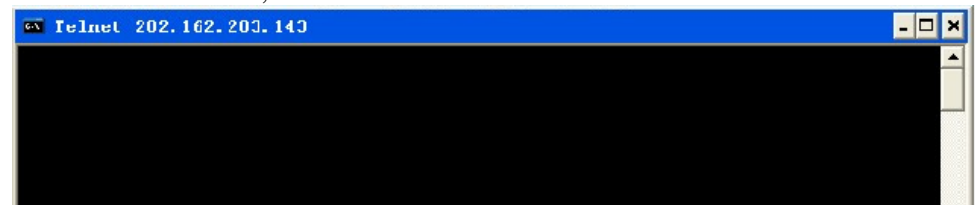
IP Camera Quick Installation Guide

Check WEB port: **telnet IP address & web port**

telnet 122.160.1.106 80

```
C:\Documents and Settings\Administrator>telnet 122.160.1.106 80
```

Then it will show it ,means successful



The same way to check the Data Transfer Port, Data control Port

IP Camera Quick Installation Guide

FAQ

Q1 : Enter default IP address can't view the video and can't search IP camera by using search tool

Please connect the IP camera directly to PC to check the IP camera(Crossover network Cable),if the IP address of IP camera are not on the same network segment of PC, please change the IP address of IP camera,make sure they are on the network segment

Q2: Forget the password of IP camera

Reset the IP camera to the default setting

Q3: How to calculate the capability of record

Bite rate * record days*24*3600/8/1024/1024=()G

Q4: Pan / tilt camera or Speed dome camera is out of control

Possible reason 1: The PTZ protocol, baud rate, address is wrong;

Solution: Set the protocol, baud rate and address meet the camera's

Possible reason 2: the signal cable is not connected properly;

Solution: Re-connect the control cable between the PAN/tilt camera or speed dome camera

IP Camera Quick Installation Guide

Q5: Why the normal data could not go through the switcher

Possible reason:

1. If it is a second-tier switcher, is the address wrong?
2. If it is a three-tier switcher, does it make the port and physical address binding?
3. Does it consider the IP camera when setting the firewall rule?

Solution:

- 1) Before checking the problem of network, please use Ping command to ping the IP address of IP camera . This is importance to check the network connection. If there is no success information returned, it means the network is in problem certainly.
- 2) If binding IP and Mac address, it will need to make some setting of switch, I add a new binding; that is to say, bind the IP address of IP camera and Mac address.
- 3) If no IP camera is considered when setting firewall rule for the switcher, it is necessary to allow the IP camera make communications at the port of 3000, 3001, 3002, 3004 and 80. Otherwise all data package will be filtered and fail to reach.

IP Camera Quick Installation Guide

Appendix 1

Default parameter of IP camera

Parameter	Default
IP address	192.168.1.19
Subnet mask	255.255.255.0
Gateway	192.168.1.1
Data Transfer Port	3000
Data control Port	3001
Remote reply Port	3002
Web Port	80
Multicast address	235.1.1.1
Multicast port	6500
Remote hose port	3004
Alarm hose port	9000
DNS server port	8080

IP Camera Quick Installation Guide

User name and Password :

Parameter	Default
Admin User Name	888888
Admin User Pwd	888888
Common User 1 Name	1
Common User Pwd	1
Common User 2 Name	2
Common User Pwd	2

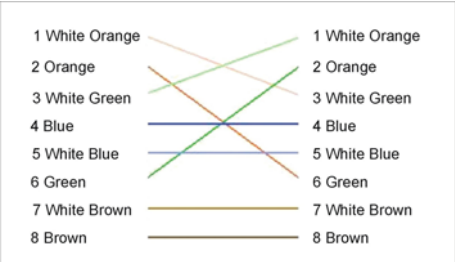
IP Camera Quick Installation Guide

Appendix 2 Network cable

(1) IP camera connect with internet(straight-through cable)

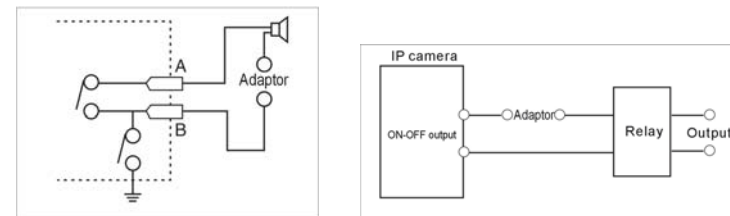


(2) IP camera connect with PC(Crossover Cable) :



IP Camera Quick Installation Guide

Appendix 3 Alarm output connection



Alarm output connection case

The alarm output is Switch value (no voltage), it is needed to connect the adaptor when connecting the sensor. When connecting the DC power (in the left diagram), the power should less than the DC 12V, 2A. When use AC power, it is needed to connect with the relay (in the right diagram). It damage to the device if no connecting to the relay.