

## Wireless settings of IP camera

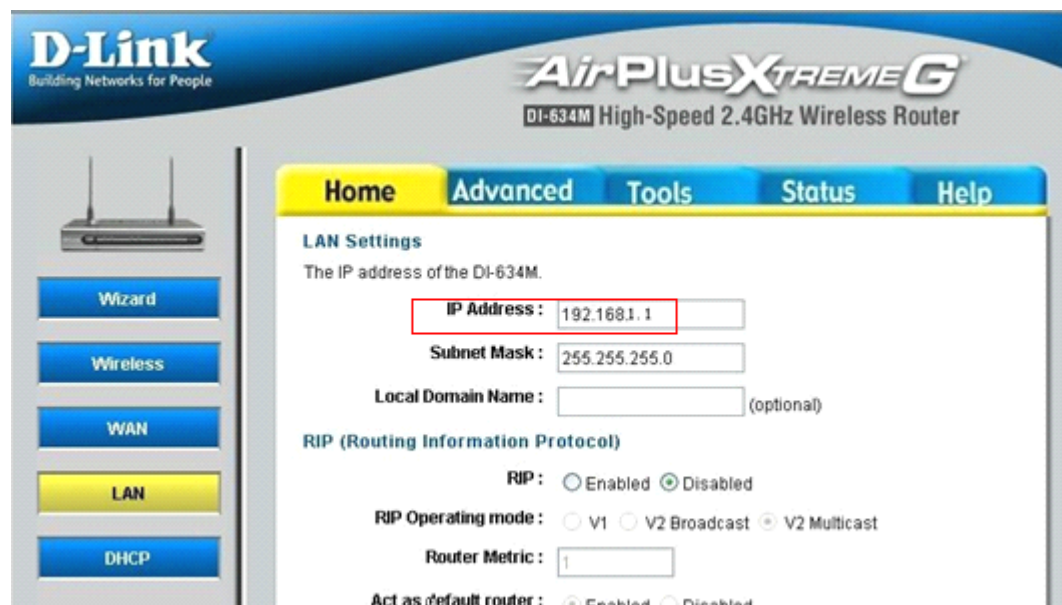
Before setting the wireless setting, you need to connect with the network cable

There are two steps of wireless setting

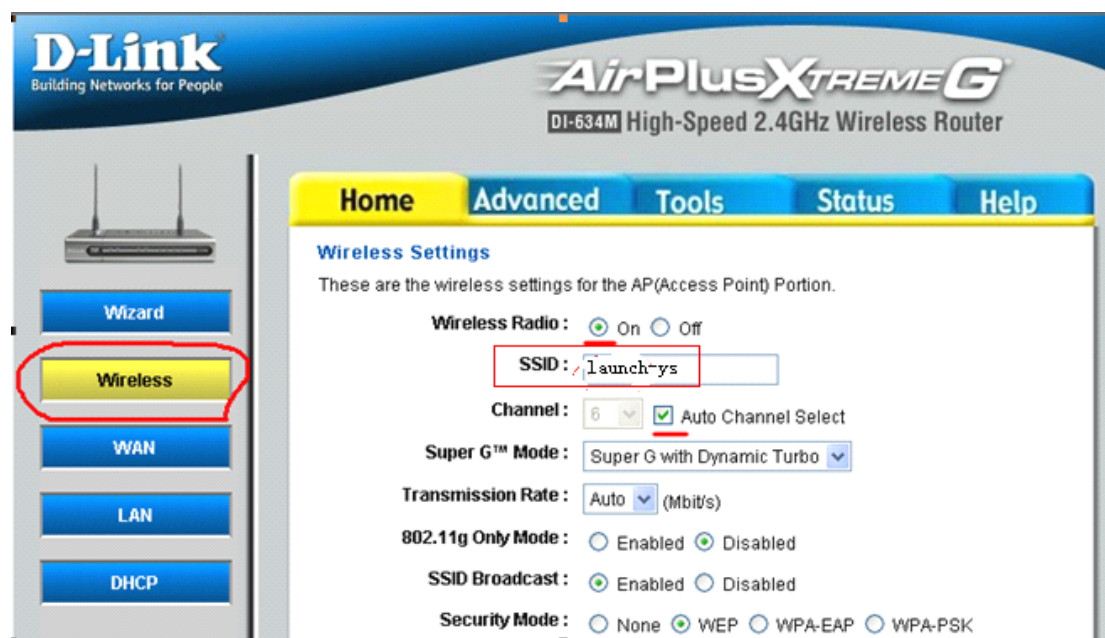
### 1. Router setting

1) Enable wireless function of router (Difference router, difference setting page, These pictures only for your reference)

Enter into Router page---enable wireless function



And if successful, you will see the “WLAN” light of the router is flashing.



## WEP

For WEP (wireless encryption) enter the same key(s) into both the router and the wireless stations -- 10 hex digits for each 64 bit key or 26 hex digits for each 128 bit key. A hex digit is either a number from 0 to 9 or a letter from A to F.

You can also enter any text string into a WEP key box, in which case the ASCII values of the characters are converted into a hexadecimal key. Use up to 5 text characters for 64 bit keys, and up to 13 characters for 128 bit keys.

Set the Authentication to "Shared Key" for greatest security.

Authentication :  Open System  Shared Key

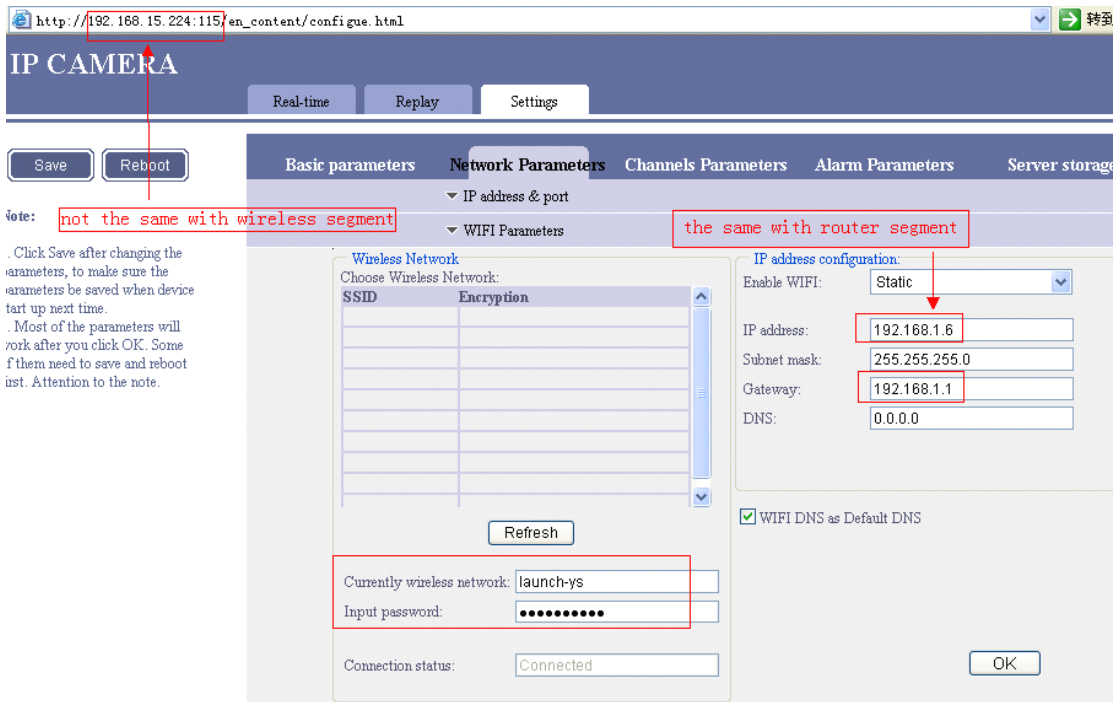
WEP Encryption : 64 bit (10 hex digits)

WEP Key 1 :	<input checked="" type="radio"/>	<input type="text" value="....."/>
WEP Key 2 :	<input type="radio"/>	<input type="text" value="....."/>
WEP Key 3 :	<input type="radio"/>	<input type="text" value="....."/>
WEP Key 4 :	<input type="radio"/>	<input type="text" value="....."/>

Apply Cancel Help

## 2. Camera setting:

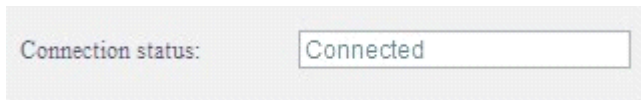
Real-time	Replay	Settings		
Basic parameters	Network Parameters	Channels Parameters	Alarm Parameters	Server storage
▼ IP address & port				
Connection type:	Static IP address <input type="button" value="v"/>			
IP address:	<input type="text" value="192.168.15.224"/>	Gateway:	<input type="text" value="192.168.15.1"/>	
Subnet mask:	<input type="text" value="255.255.255.0"/>	DNS:	<input type="text" value="0.0.0.0"/>	
MAC address:	<input type="text" value="00-E8-01-01-09-FA"/>			
WEB port:	<input type="text" value="115"/>	Data transfer port:	<input type="text" value="3111"/>	[1-65533]
Alarm host address:	<input type="text" value="0.0.0.0"/>	Alarm host port:	<input type="text" value="8000"/>	
Remote host address:	<input type="text" value="0.0.0.0"/>	Remote host port:	<input type="text" value="3004"/>	
Multicast address:	<input type="text" value="235.1.1.1"/>	Range:[225.0.0.0-239.255.255.255]		
Multicast port:	<input type="text" value="6500"/>	Range:[6000-9999]		
Note: Any changes of network parameters will take effect after saved and system restarted.				
<input type="button" value="OK"/>				



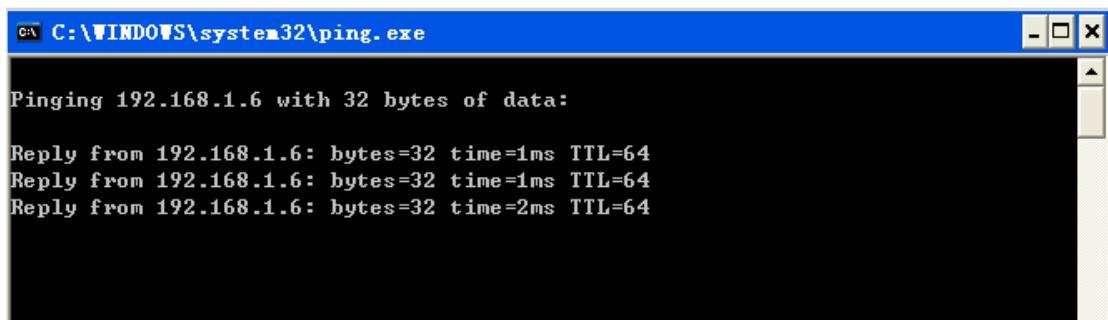
Copy the SSID name to  and the **WEP Key 1:** to the 

Fill the wireless IP address, subnet mask and gateway then save the setting, then reboot IP camera

After the IP camera connect with wireless network , the connection status will display as

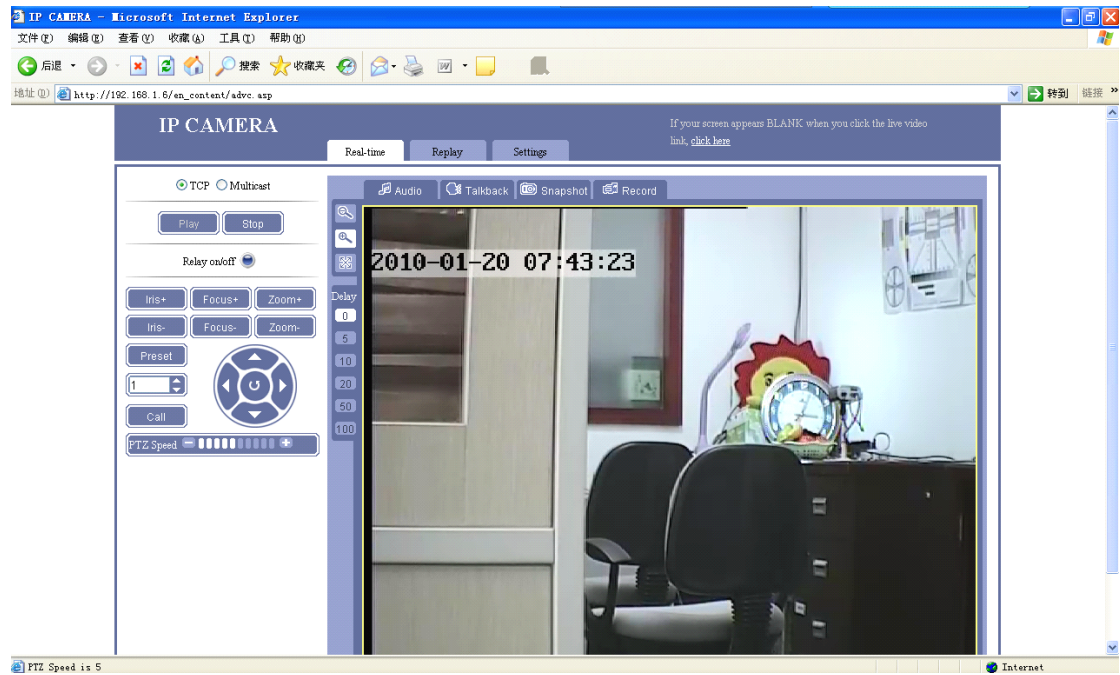


And you can ping the wireless IP address of IP camera to make sure the connection is success



Pull out the wire

Now you can view the IP camera via the wireless IP address



If you want to view the IP camera remotely via wireless network, you need to do mapping at router, the ways are the same as wired camera ,please reference document “Port Mapping Guide.doc”