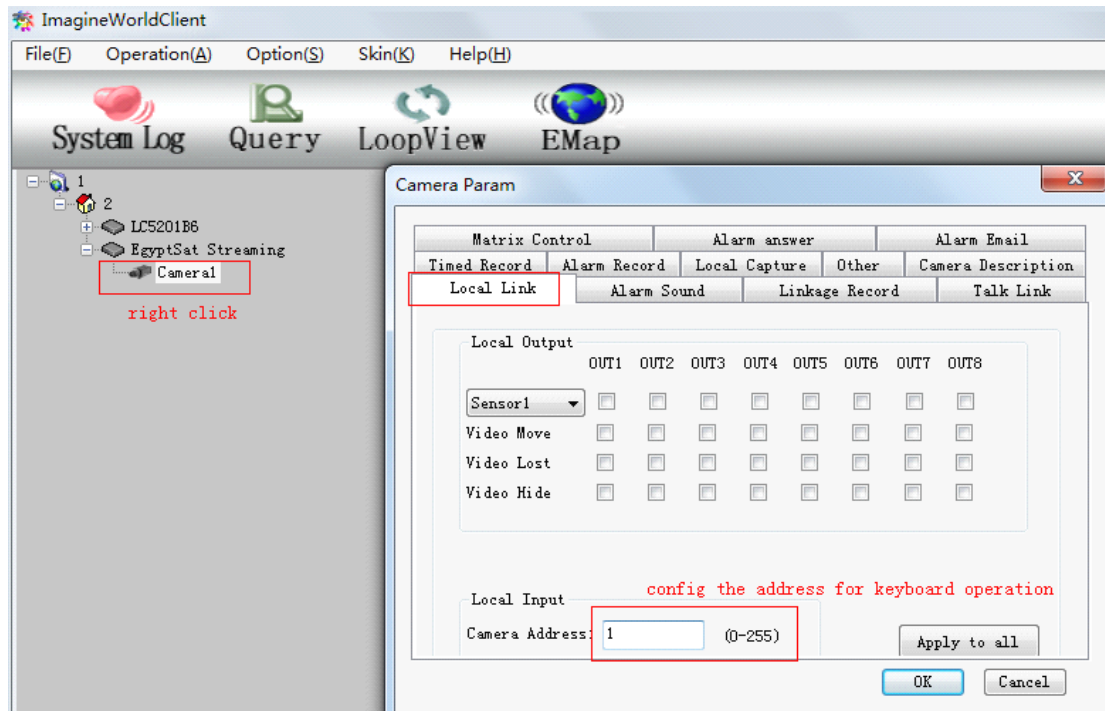


# Using keyboard to operate imagineworldclient software

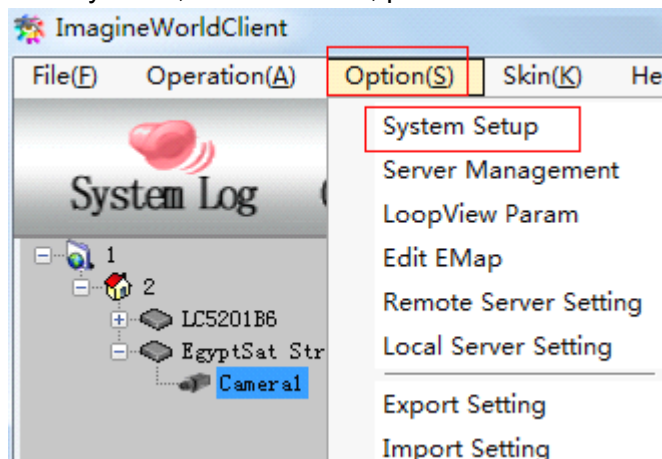
Before settings, connect the keyboard output with 232 port of computer.

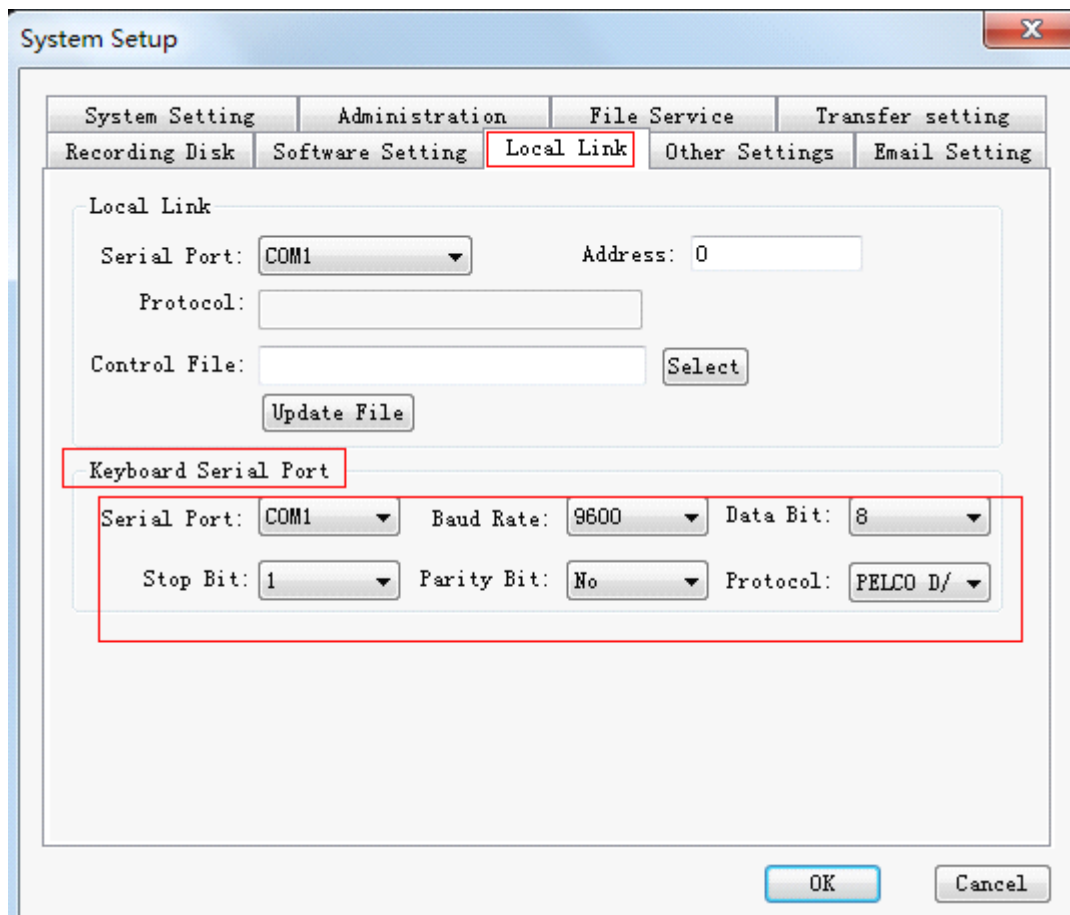
1, Config the camera address for keyboard operation



2, settings in imagineworldclient software

“Option”---“system setup”---“local link”----Set up the keyboard serial port same with the keyboard, like baud rate, protocol





3, operate by keyboard

Input "1"---"cam"---then can control the camera of address 1,

Input "2"---"cam"----then can control the camera of address 2.