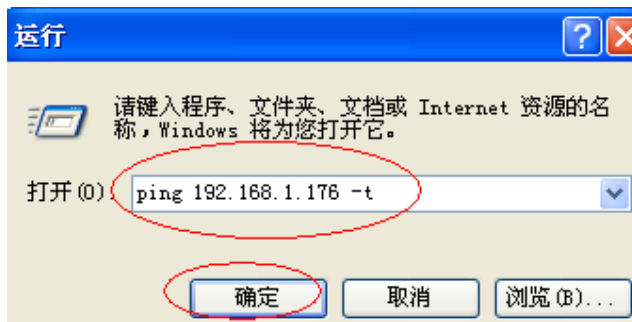
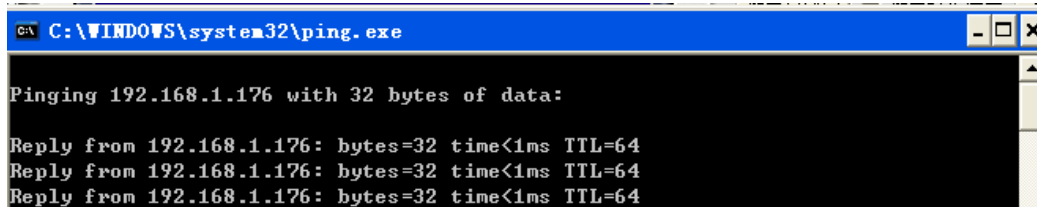


ROM Update Instructions

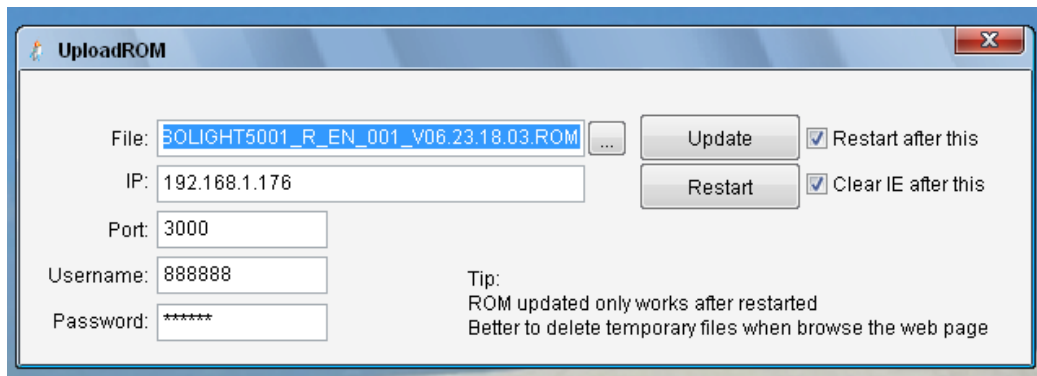
1. Please ping the IP address of your IP camera to make sure your network connection is success



This display means it is success



2. Open the update tool "UploadROME", and fill these setting to finish the update



Choose the update "ROM" file to update

IP: IP address of IP camera

Port : Data Transfer Port

And fill the username and password

And select "Restart after this", "clear IE after this"

Then Click "Update" and restart to finish update