

# Port Mapping Guide

It is necessary to do port mapping when access IP camera /network video server from WAN.

1. Checking the IP camera/video server's port.

There are two ways to check them

- i. Web Browser--- setting---Network Parameters—IP address&port—Web port & Data Transfer port (Figure 1)

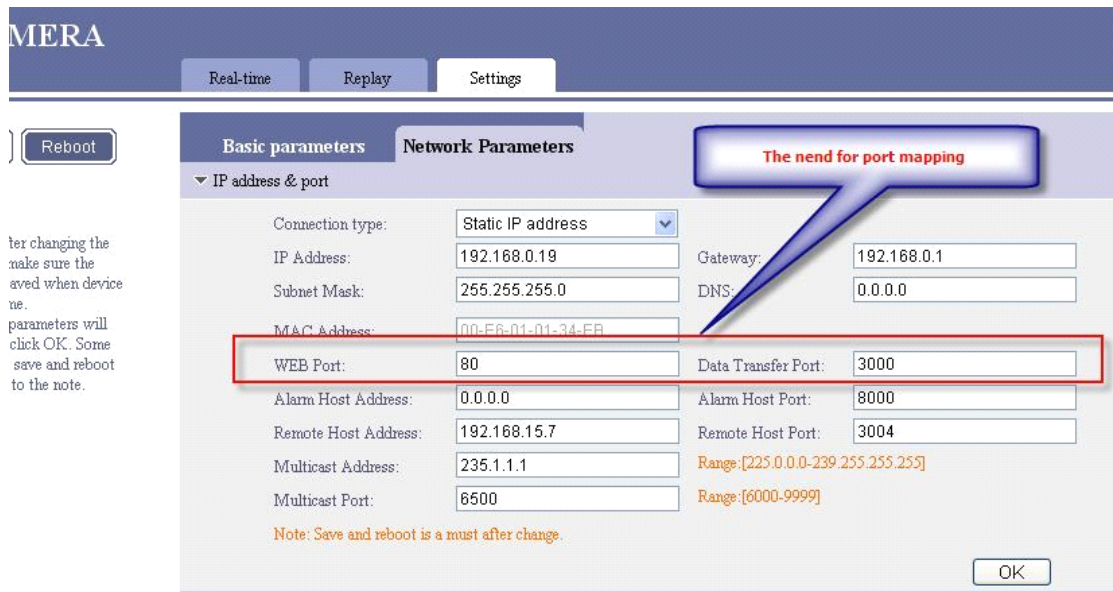


Figure 1 Web Browser Settings interface

- ii. Software Imagineworld---option---Remote server setting—Network Param--web port & local port (Figure 2)

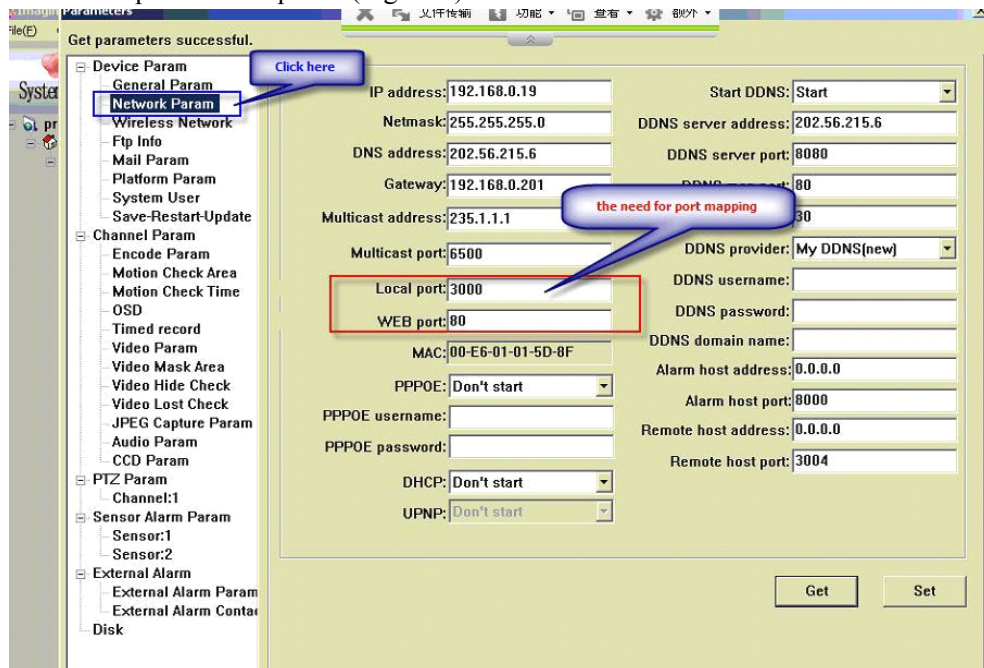


Figure 2 Software interface

These Ports need to be checked:

- 1) Web Port
- 2) Data transfer port (Local port)
- 3) Data control port (Hide port)=Data transfer port +1

For example, The figure 2,

The Local port (Data transfer port) is 3000,

The data control port = Data transfer port +1=3000+1=3001

## 2、 The Router settings

### Do port mapping in the router :

- 1) Transmit rule---virtual server

It is necessary to add the mapping ports into the router list

WEB Port 、 Local Port( Data Transfer Port) and Data control port.

The Port setting as follows:

Virtual Servers

ID	Service Port	IP Address	Protocol	Enable
1	3000	192.168.0.19	ALL	<input checked="" type="checkbox"/>
2	3001	192.168.0.19	ALL	<input checked="" type="checkbox"/>
3	80	192.168.0.19	ALL	<input checked="" type="checkbox"/>
4		192.168.0.	ALL	<input type="checkbox"/>
5		192.168.0.	ALL	<input type="checkbox"/>
6		192.168.0.	ALL	<input type="checkbox"/>
7		192.168.0.	ALL	<input type="checkbox"/>
8		192.168.0.	ALL	<input type="checkbox"/>

Common Service Port: DNS(53) Copy to ID 1

Clear All Save

Virtual Servers Help

Virtual servers can be used for setting services on your LAN. A virtual server as a service port, and all requests from to this service port will be redirected to the computer specified by the server IP. A was used for a virtual server must have or reserved IP address because its may change when using the DHCP full.

- **Service Port** - The numbers Ports. You can enter a service range of service ports (the form YYY,XXX is Start port, YYY is End port).
- **IP Address** - The IP address running the service application
- **Protocol** - The protocol used application, either TCP, UDP, protocols supported by the router.
- **Enable** - The Enable checkbox the virtual server entry.
- **Common Service Port** - Some services already exist in the list.

To setup a virtual server entry:

1. Select the service you want to

Figure 3 Virtual Servers interface

Mapping finished. You can check the WAN IP address from Router Status

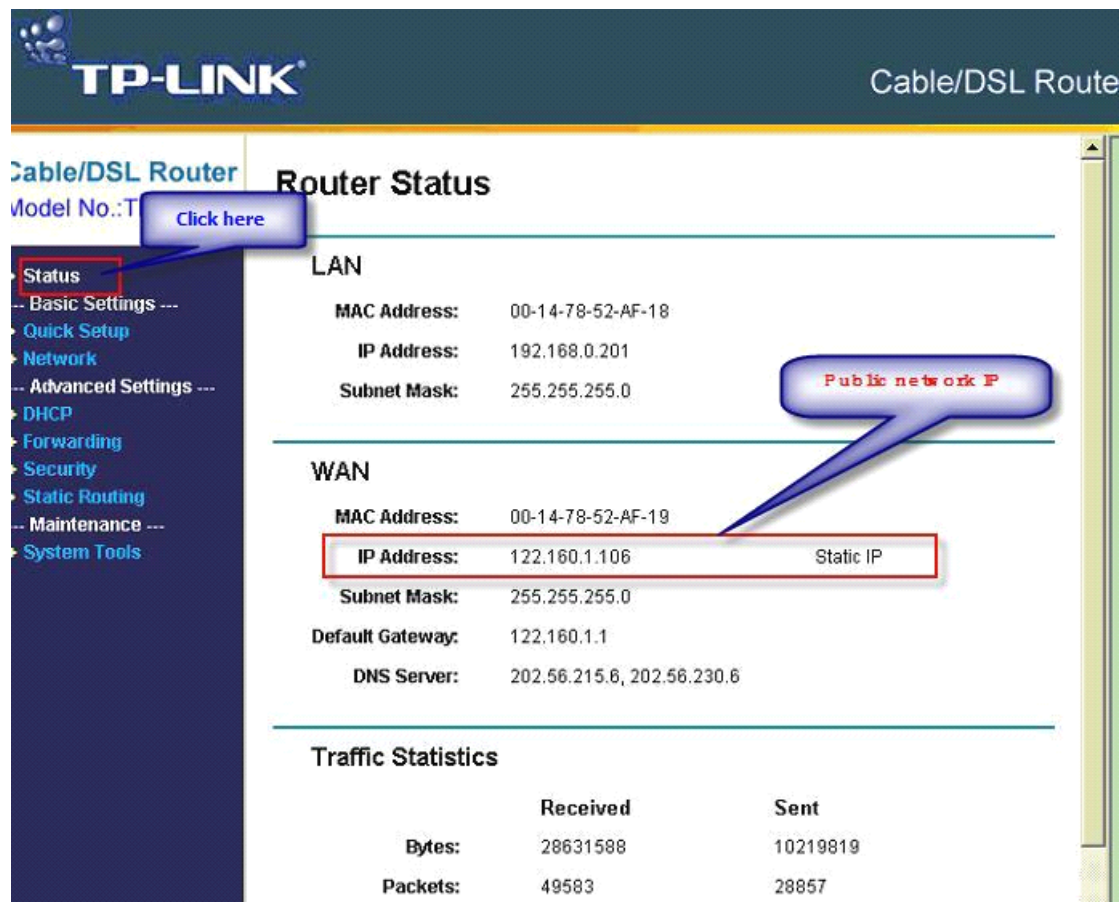


Figure 4 WAN IP interface

Now you can visit the IP camera/Network video server remotely through IP address and WEB port

For example :

The WAN IP address :122.160.1.106

The WEB port:80

So visiting IP camera or network video server in WAN should be:

http:// 122.160.1.106:80

If you can't access to IP camera/Video Server remotely, Please check the port which you mapped in the router, make sure they aren't used before.