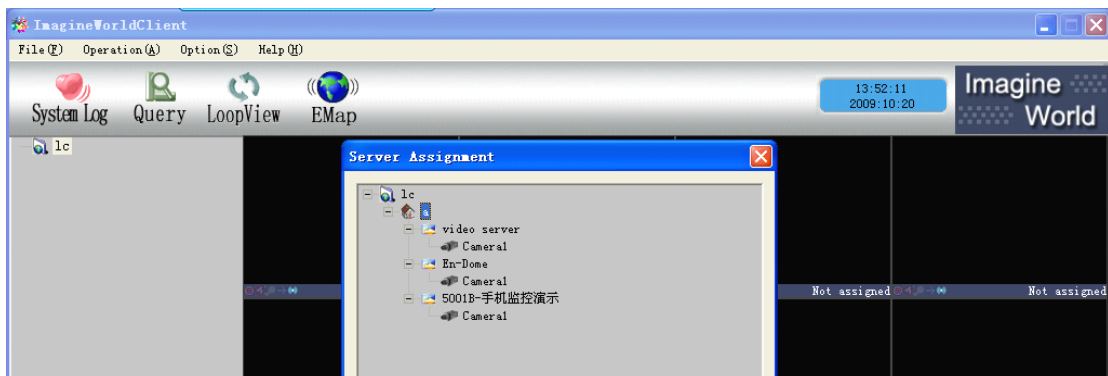
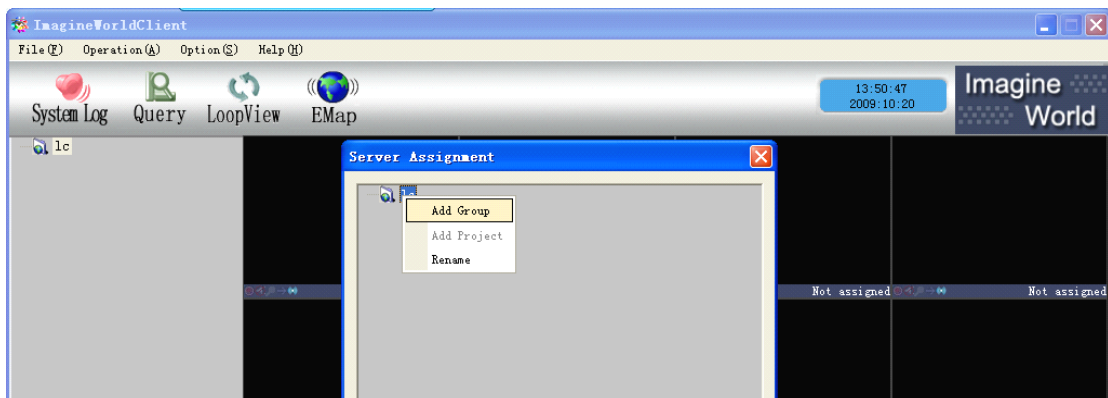
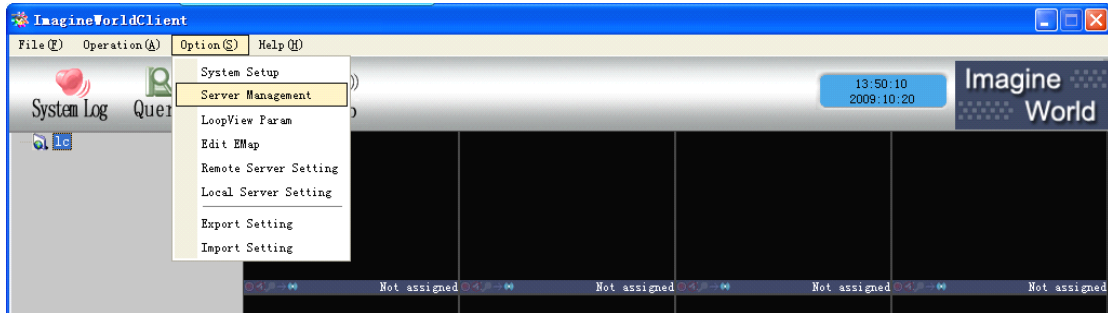
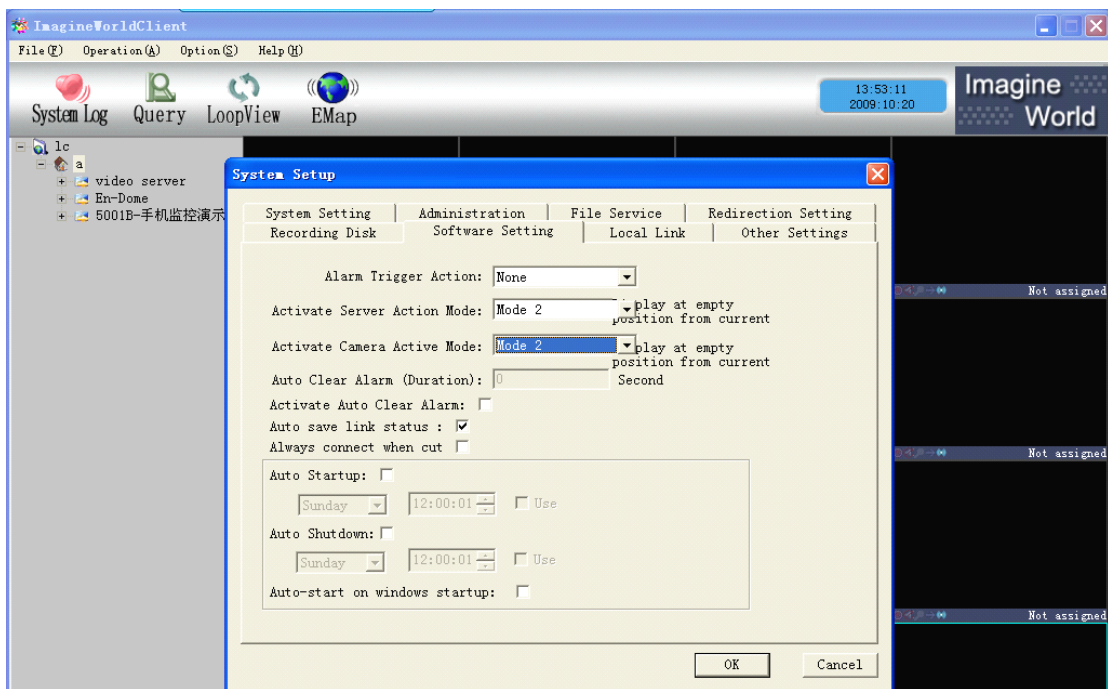
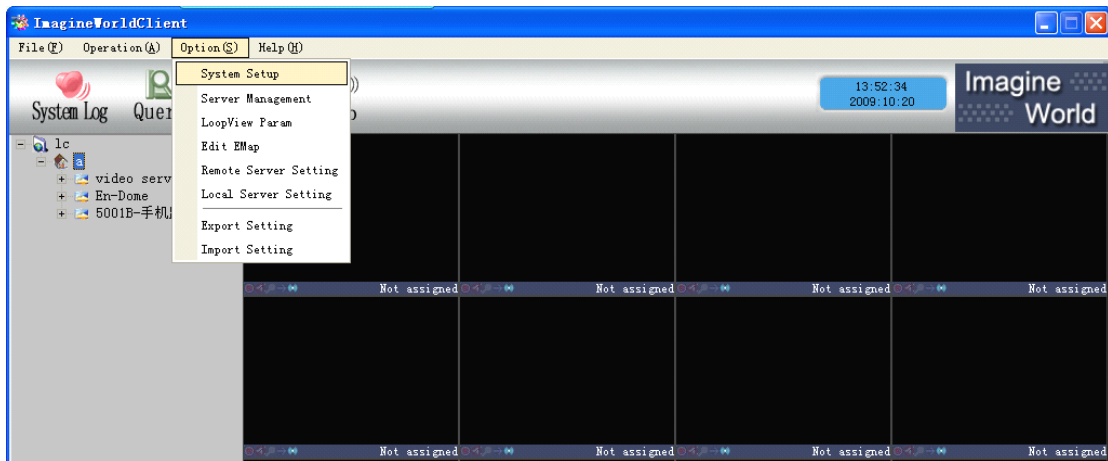


Page settings

1> Add devices: add project→add group→add device→add server→Ok



2> Activate server action mode set: Options→system setup
→software settings→Activate server action mode / Activate
camera action mode→OK



3> Set up page or down page: 1→double click device, 2→double click device 3→……Note: When one pager full(16 channels), then in the Admin item double click the device would auto change to next pager.



