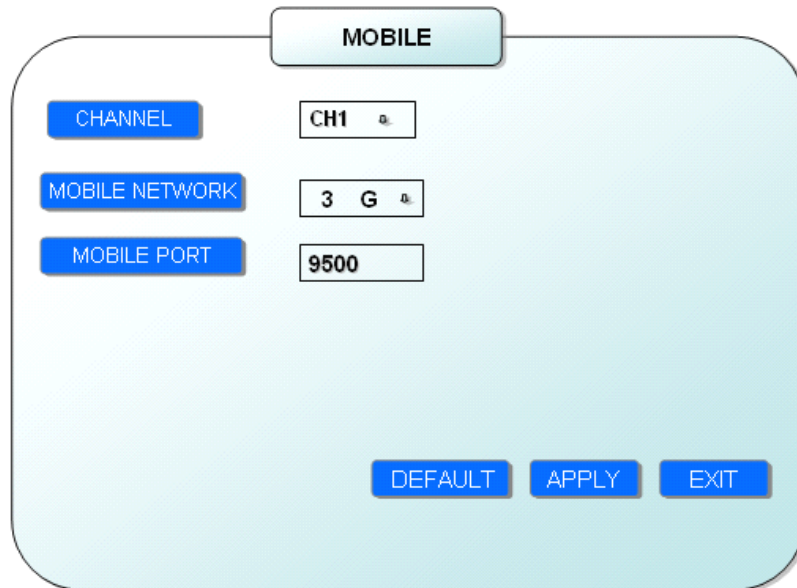


Instruction for mobile monitor

Remark: only the mobile phone with Windows Mobile(6.1) and Symbian (6.0)operating system can support the mobile phone monitor function.

1. IP DEVICE Setup

Please login MAIN MENU>>>> ADVANCE>>>>MOBILE, setup as follow:



The screenshot shows a light blue rounded rectangular window titled "MOBILE". Inside the window, there are three rows of settings, each with a blue button on the left and a text box on the right:

- Row 1: "CHANNEL" button, text box containing "CH1".
- Row 2: "MOBILE NETWORK" button, text box containing "3 G".
- Row 3: "MOBILE PORT" button, text box containing "9500".

At the bottom right of the window, there are three blue buttons: "DEFAULT", "APPLY", and "EXIT".

Channel: Please select the channel for wireless transmission.

Mobile Network: Please select the network your SIM card support.

Mobile port: this port should be open in the router; otherwise you can't see the live view in mobile phone.

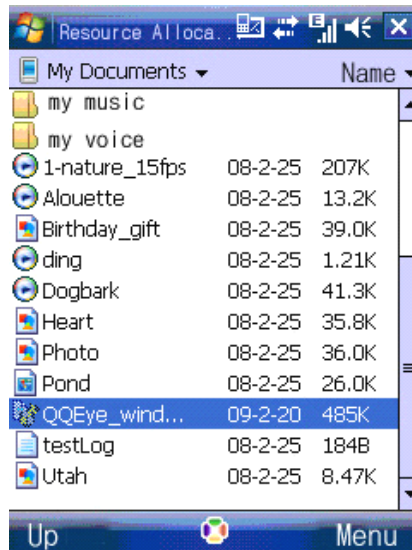
Remark: this port can't be the same with any other port and different IP DEVICE should have different sever port.

2. Mobile phone setup

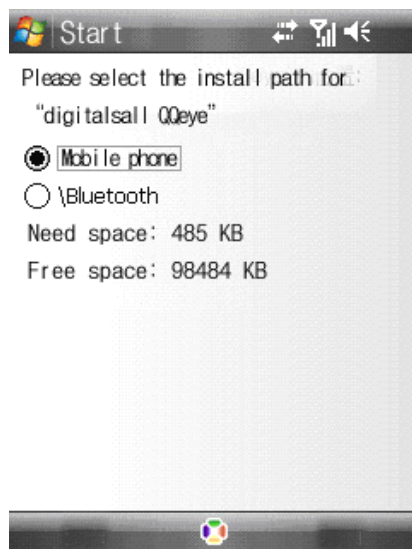
2.1 Windows Mobile Operating system

1) Program download

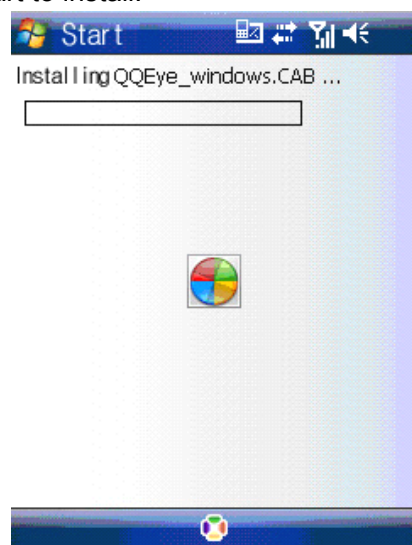
Please copy the installation program whose name is amplayersetup.CAB from the attached CD to your mobile phone, the default save path is My Documents.



2) Click the program and start to install it, just select default path when it ask you to select install path.



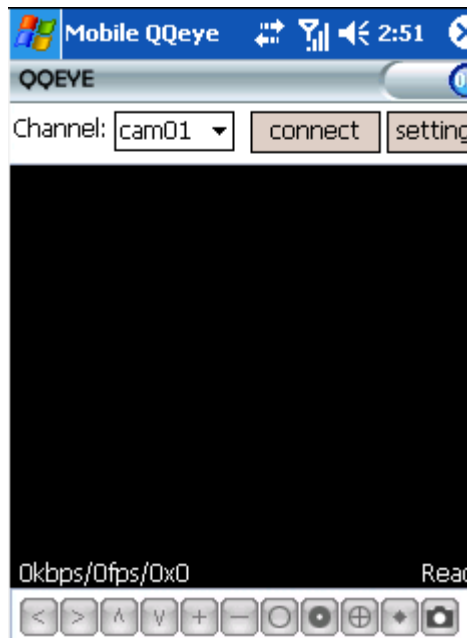
3) Click install button to start to install.



4) After installed, click the QQEye icon to run the program.



5) login the main interface as follow.



Channel: select the channel you want to monitor. When you select a channel, it will connect to IP DEVICE automatically.

Connect: press it to connect to IP DEVICE.

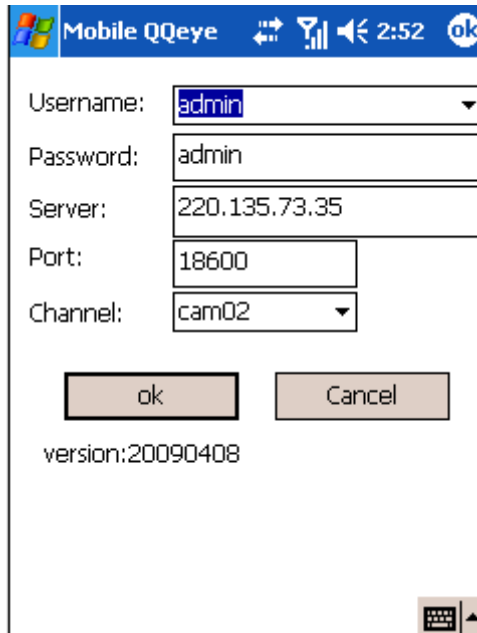
Setup: Press it to enter into the interface to config the parameters for mobile phone monitor.

Button definition: 【PTZ direction control (left、right、up、down)】 ; 【area select (zoom in、zoom out)】 ; 【focus (+、-)】 ; 【aperture (+、-)】 ; 【snapshot】 .

Remark: Please make sure the parameters for PTZ in IP DEVICE is correct.

Snapshot default save path is: Program>>>QQeye>>>> photo

6) When you login for the first time, please setup the network parameters first, press setup to enter into the interface, as follow:



User name: can be blank.

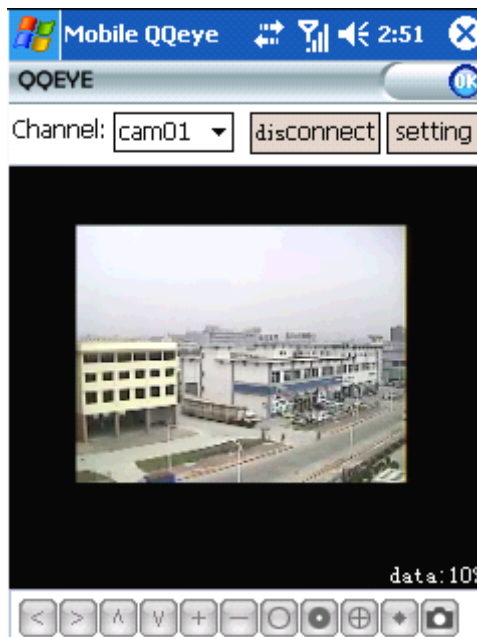
Password: should be the same as IE.

Sever: the public IP or dynamoic domain name of IP DEVICE.

Sever port: this port is the mobile port you setup in IP DEVICE.

Channel: setup the default channel you want to check.

Please press OK after you finished setup.



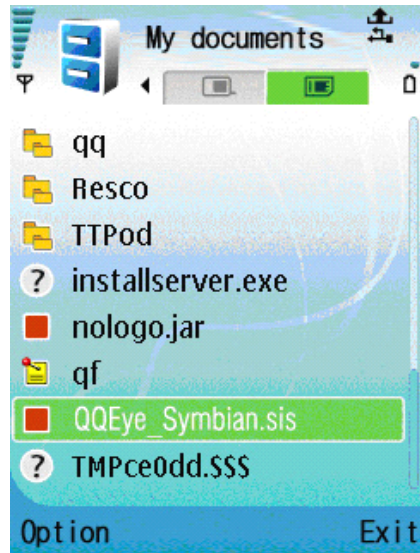
7) Display mode

Normal/Full screen

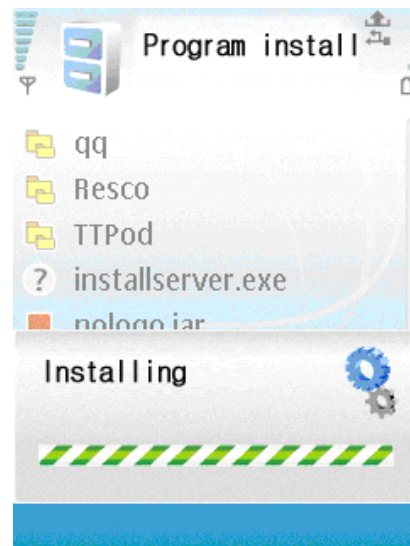
Remark: Click screen can switch the display mode between normal and full screen.

2.2 Symbian Operating system

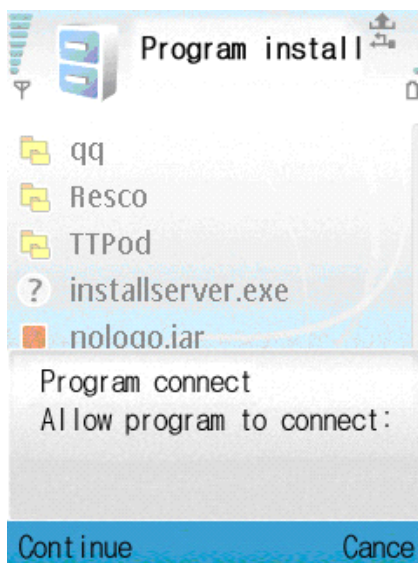
1) Please copy the install program whose name is amplayerssetup.CAB from the attached CD to your mobile phone, the default save path is memory card. As follow:



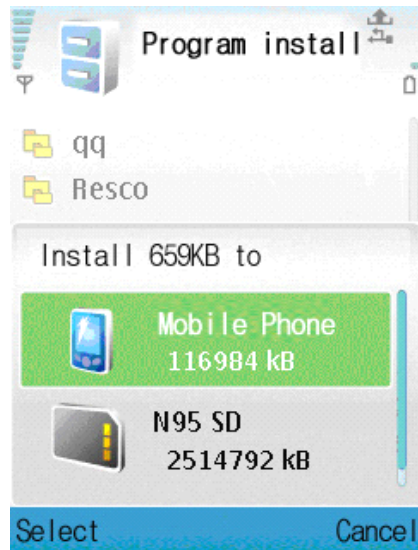
2) Click the program to install it.



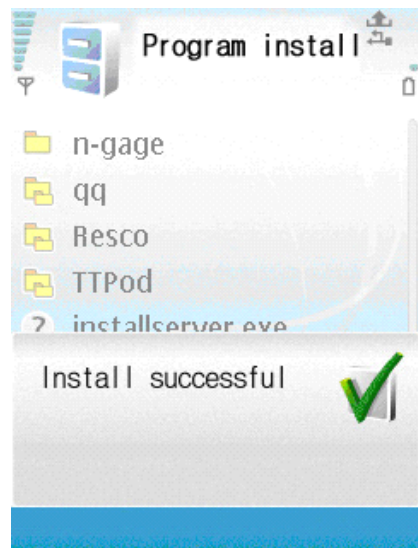
3) You can select the install path you want as the follow picture .



4) Please select continue when you got the follow window, and make sure your mobile phone can access to internet.



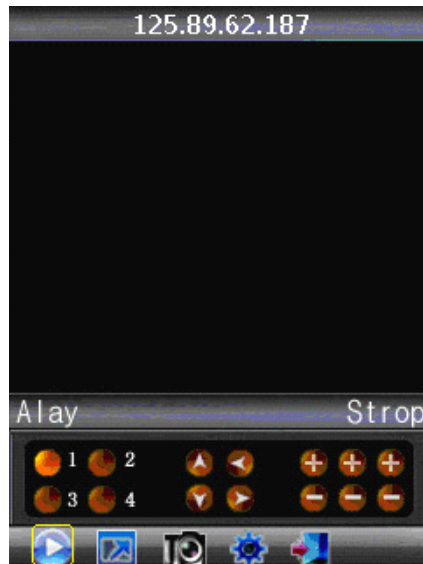
5) you will get a message "install finished" after installed successful.



6) Please find the QQeye icon in Application and run it.



7) when you login, you will find the window as follow:



Button definition:

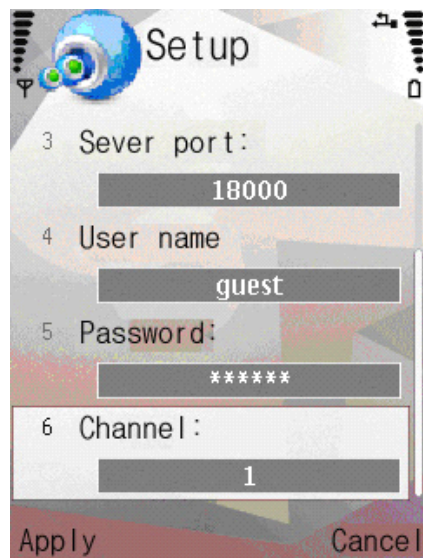
CH1 CH2 PTZ : up left zoom in + focus + aperture +

CH3 CH4 PTZ : down right zoom out – focus – aperture –

【Play/Pause】 【Full screen/Normal】 【Snapshot】 【Setup】 【Exit】

Remark: Snapshot default save path is: "C: \Data\Images\"

8) When you login for the first time, please setup the network parameters first, press 【Setup】 to enter into the interface, as follow:





Net Access point: Please select the network, GPRS/EDGE/3G

Sever address: the public IP or dynamic domain name of IP DEVICE.

Sever port: the sever port is the mobile port you setup in IP DEVICE.

User name: can be blank.

Password: the same as IE.

Channel: setup the default channel you want to check.

Please press Apply after you finished setup.













9) Display mode

Normal/ Full screen

Remark: Click screen can switch the display mode between normal and full screen.

Support Mobile List

Below is support Launch brand IP Device mobile phone list. The Cell must support GPRS/EDGE and support stream media surveillance.

Supplier	OS	models
 NOKIA Connecting People 诺基亚	symbian s60 v3.0	N71、N73、N75、N76、N77、N78、N80、N81、N82、N91、N92、N93、N93i、N95、N96、N97、E50、E65、E61、E61i、E62、E60、E70、E71、E66、E90、5700、6110、6120、6220、6121、6122、6290、6110Navigator、N80、3250、5500、5700、5320、5800、6210N、6220、6650F、E63E66、E71、N79、N85、N96、E61i
	Mobile Pocket PC	MPX220、MPX、Q8、Q7、V1000
	symbian s60 v3.0	I400、i408、i450、i458、i500、i550、i520、i560、i570、i558、G810、G818、I8510
	Mobile Pocket PC	SGH-i718、i900、i1859、i728、i780、i617、i608、i718、i710、i760、i200、i688、i620、i315、I908E
 多普达	Mobile Pocket PC	686、696、696i、699、700、818、828+、838、900、830 MUSE、CHT9000、P800、M700、C858、9100、9110、D600、U1000、P4550、P3450、D802、E806c、S1、P5500、E616、P860、D805、Touch DUAL、Diamond P3470 P660 S600 S900 X7510 C730 E616 E806c P3600i P4550 P860 U1000 699 818 Pro 818 P9000 700 696i E806c S700 S730 C858 900
	Mobile Pocket PC	ET-280、ET-560、ET-580、ET-960、ET-980、XP618 ET860 ET800 ET600
 夏新	Mobile Pocket PC	N810、N800、N8、E870、E860、E800、E850 N7
 明基-西门子	Mobile Pocket PC	P51、P50
	Mobile Pocket PC	O2 Cocoon O2 Flame O2 Helen O2 XDA Atom O2 XDA Graphite O2 XDA Zinc O2 Xda Argon O2 Cosmo O2 Xda Atom O2 Xda Orbit O2 Xda Stealth
 invent	Mobile Pocket PC	惠普 iPAQ rw6818 HW6515
	Mobile Pocket PC	M930w P320 P560 兰博基尼 ZX1 P526 P735 P535 P750 P550

技嘉	Mobile Pocket PC	MS800 i350	MS804 t600	MS808 i300	MS820	g-Smart I	i128	i300c
----	-------------------------	---------------	---------------	---------------	-------	-----------	------	-------

Note: Symbian operation make sure above 6.0 version.

Symbian, Mobile, iphone, android 1.6 ,2.0,2.1