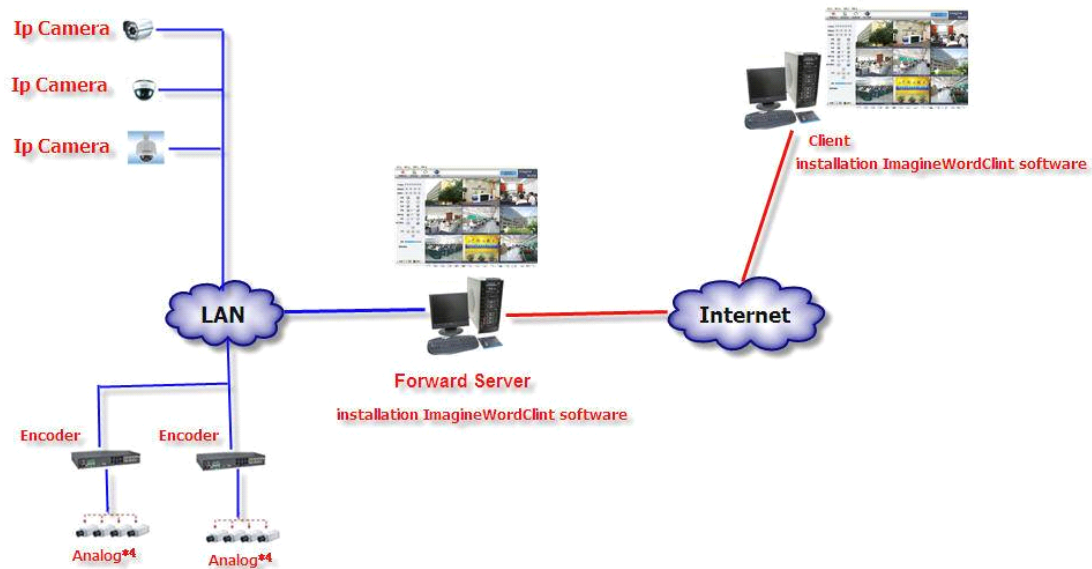


Forwarder Server Setting

The diagram of Forwarder Server System like this,



The function of Forwarder Server system is remote clients can access remote cameras those at another LAN through Forwarder Server

Advantages of Forwarder Server:

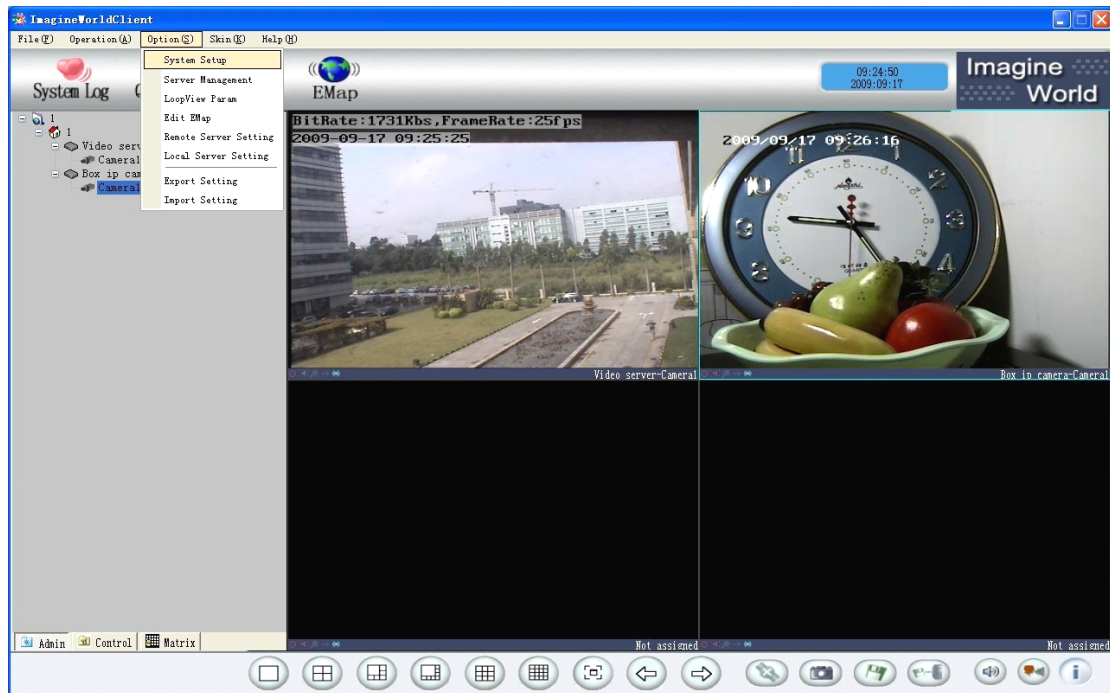
- 1) Increase in the number of users: there are 10 viewers of 1 device view at the same time.
Use forwarder server, 100 views can view at the same time
- 2) Save bandwidth in the big project(more than 1000pcs devices)
- 3) Optimization of network structure
- 4) Share records, Clients can share the records those on forwarder server
- 5) Access remote cameras those at the LAN of forwarder server

Both Forwarder server and Client need to install the software: ImagineWorldClient

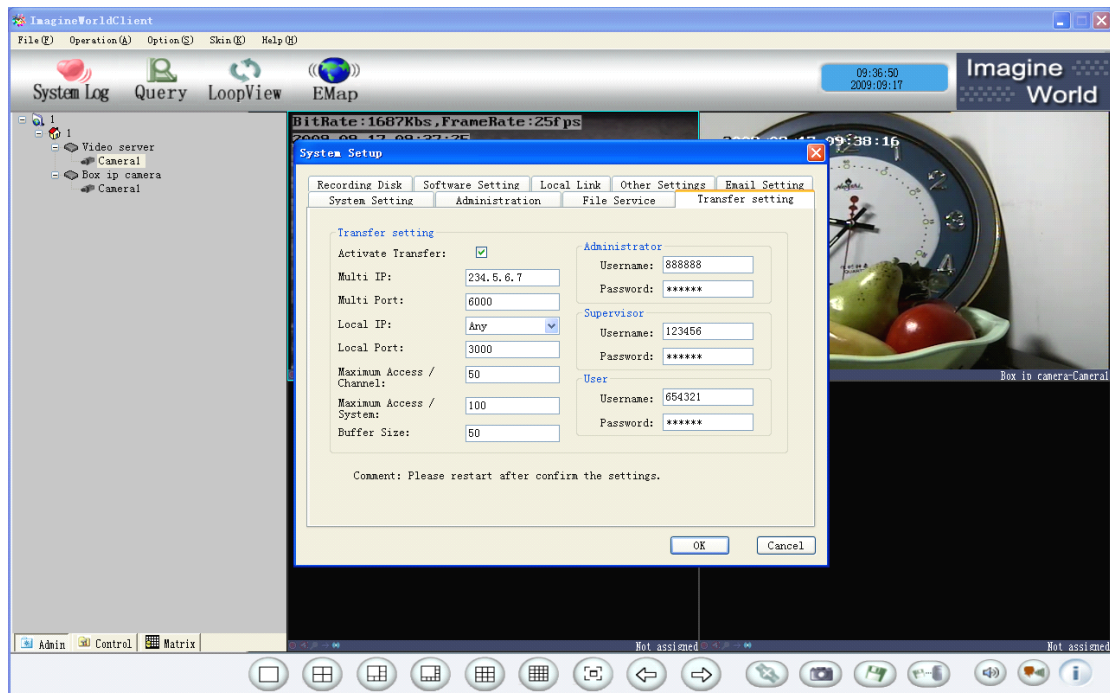
The steps as follows:

1. Forwarder server setting:

- 1) Please select the camera that you want to forward, then click "ImagineWorldClient"--"Optional"—"System Setup"



You will see this picture, please click “Transfer setting”



All these parameters are the address parameters of server that the management software at

Multi IP: Multicast Address

After you finish settings, please reset the software

2) At the same time, you need to do mapping of some ports in your router

Date Transfer Port :The default is 3000

Date control port=Date transfer port +1

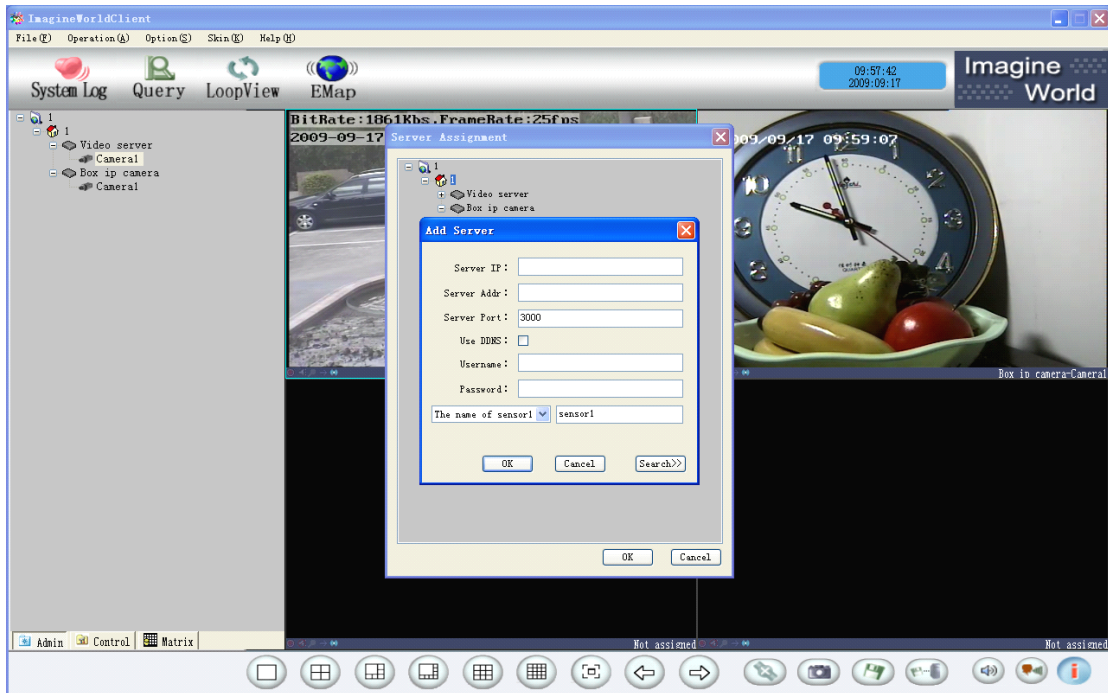
Record playback port=Date transfer port +2
 Date base transfer port=Date transfer port + 3
 Remote hose port=Date transfer port +4

The mapping of router like this(Private IP is the LAN IP of forwarder server)

Name	Private IP	Protocol	Firewall Rule	Schedule
Transfer Ser4	192.168.16.49	TCP 3004/3004	Allow All	Always
Transfer Ser3	192.168.16.49	TCP 3003/3003	Allow All	Always
Transfer Ser2	192.168.16.49	TCP 3002/3002	Allow All	Always
Transfer Ser1	192.168.16.49	Both 3001/3001	Allow All	Always
Transfer Server	192.168.16.49	TCP 3000/3000	Allow All	Always

2. Client setting

Add cameras



Server IP: The camera name, must be the same as that on the forwarder server

Server Addr: The IP address of forwarder server 's WAN IP address

Username and password: the user name and password of camera

Finish all these settings , you can access the cameras' information from the forwarder server