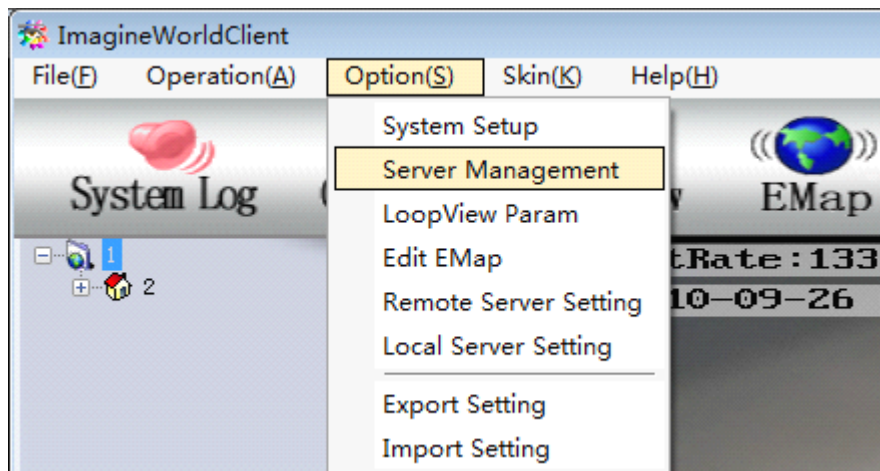
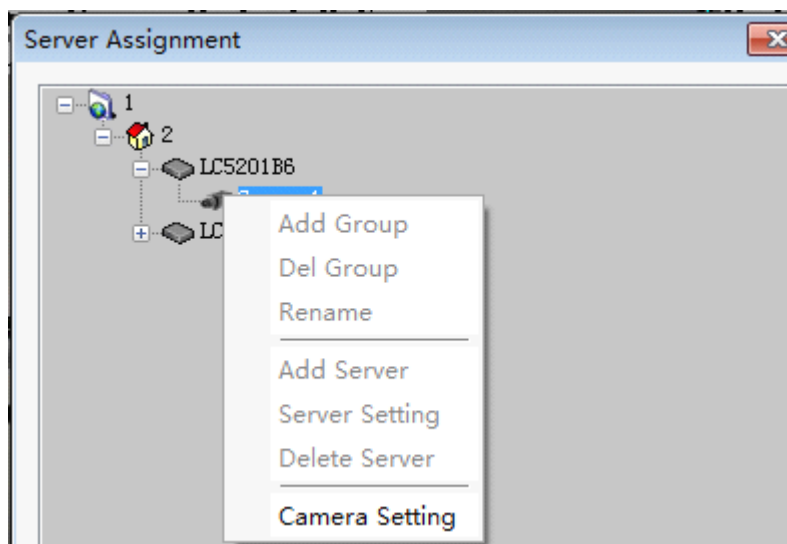


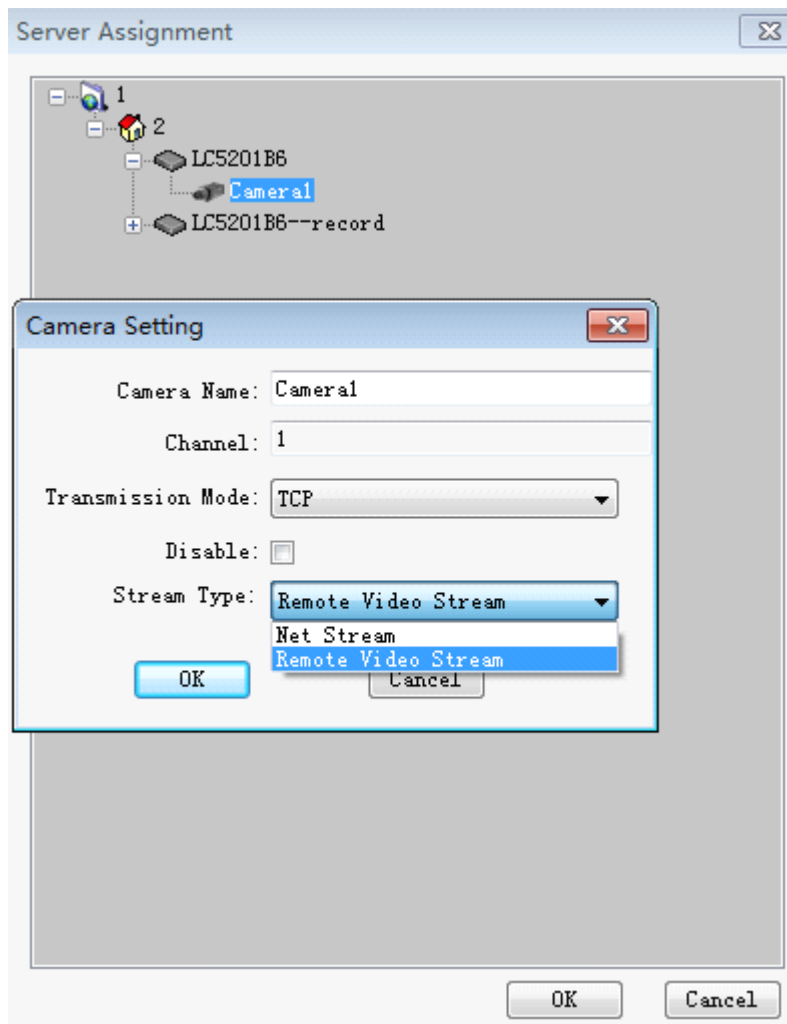
Double stream for recording and viewing

Click “option”----“server management”

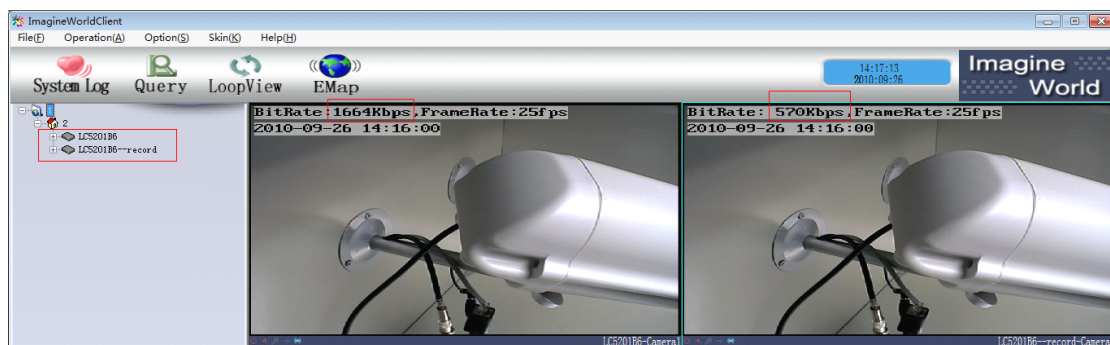


Right click “camera” icon----“camera setting”





Then, you can add two different stream, “Net Stream”---“Remote Video Stream”



You can set the stream parameters on IE

“settings”---“channels parameters”---video coding”

The screenshot shows the 'IP CAMERA' settings interface. At the top, there are tabs for 'Real-time', 'Replay', and 'Settings'. Below these are 'Save' and 'Reboot' buttons. The main content area is titled 'Channels Parameters' and includes sub-sections for 'Character superposition' and 'Video Coding'. Under 'Video Coding', there are three columns of settings: 'Network Transfer Stream', 'Server-end storage stream', and 'Mobile watching stream'. Each column has a red box highlighting its title. The 'Network Transfer Stream' settings include Resolution (4CIF(D1)), Bite Rate Type (Constant), Max. Bite Rate (500), Quality Upper Limit (2), Quality Lower Limit (31), Frame Rate (25), Stream Type (Video only), Key Frame Interval (100), and Compression (H.264). The 'Server-end storage stream' settings include Resolution (4CIF(D1)), Bite Rate Type (Constant), Max. Bite Rate (1500), Quality Upper Limit (2), Quality Lower Limit (31), Frame Rate (25), Stream Type (Video only), Key Frame Interval (100), and Compression (H.264). The 'Mobile watching stream' settings include Resolution (QCIF), Bite Rate Type (Constant), Max. Bite Rate (500), Quality Upper Limit (2), Quality Lower Limit (31), Frame Rate (25), Stream Type (Video only), Key Frame Interval (100), and Compression (H.264). A note at the bottom states 'Note: Save and reboot is a must after change.' and an 'OK' button is at the bottom right.

IP CAMERA

Real-time | Replay | Settings

Save | Reboot

Note:

1. Click Save after changing the parameters, to make sure the parameters be saved when device start up next time.
2. Most of the parameters will work after you click OK. Some of them need to save and reboot first. Attention to the note.

Channels Parameters

Character superposition

Video Coding

Network Transfer Stream	Server-end storage stream	Mobile watching stream
Resolution: 4CIF(D1)	Resolution: 4CIF(D1)	Resolution: QCIF
Bite Rate Type: Constant	Bite Rate Type: Constant	Bite Rate Type: Constant
Max. Bite Rate: 500	Max. Bite Rate: 1500	Max. Bite Rate: 500
Quality Upper Limit: 2	Quality Upper Limit: 2	Quality Upper Limit: 2
Quality Lower Limit: 31	Quality Lower Limit: 31	Quality Lower Limit: 31
Frame Rate: 25	Frame Rate: 25	Frame Rate: 25
Stream Type: Video only	Stream Type: Video only	Stream Type: Video only
Key Frame Interval: 100	Key Frame Interval: 100	Key Frame Interval: 100
Compression: H.264	Compression: H.264	Compression: H.264

Note: Save and reboot is a must after change.

OK

After that, you can choose which stream to record, which one to view.

The stream only for recording, you don't need to view it, just start the Local record

