

Double Streams Settings

Double Streams:

1. Network Stream: The camera use the lower stream to adapt defferent network for more smooth image online.
2. Remote Video Stream: The camera use the higher stream to get higher definition video.

Defferent users have defferent bandwidths.

If your remote network transmission is not good,you can choose the network stream to easier watch the smooth image online.

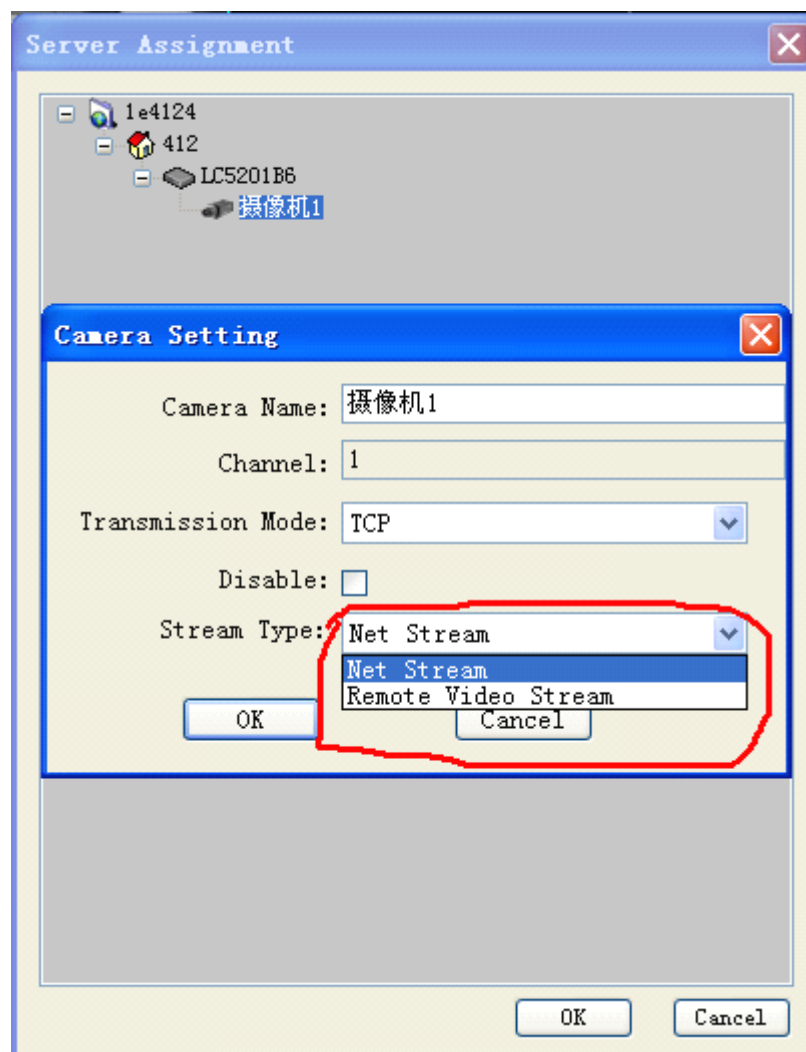
If you want to watch the higher definition video,you can choose the remote video stream,then the camera will store the high definition video in frond-end.

(Note:Double streams are applied to the stand-alone client software,not support the IE browser)

Operational processes is as follows:

- 1.Open the client software>>click “option ”>>“Sever Management”>>choose equipment>> Right-click>>”setup camera”>then will appera a little window,choose your stream type.

As illustrated:



2. Enter "remote sever setting" setup the parameter of streams, click "option">>"remote server setting">>"Channel Param" >>"Encode Param">>to setup corresponding parameter.

As allustrated

