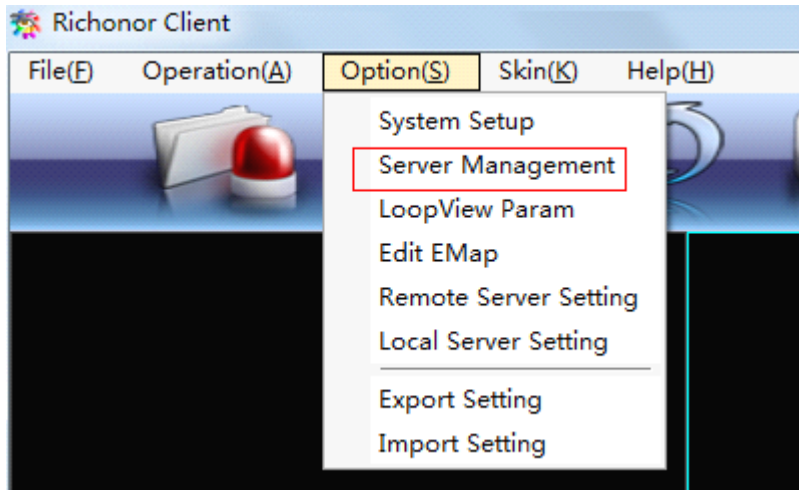


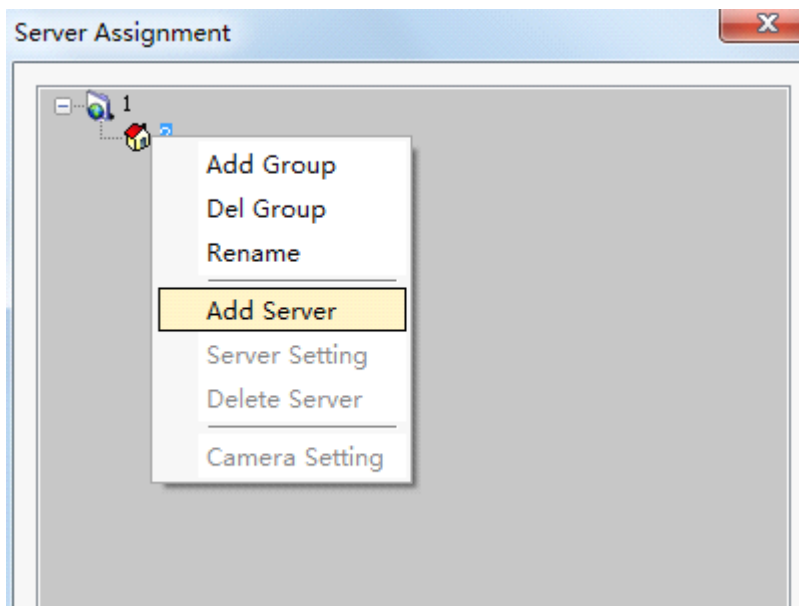
## Basic settings of network parameter

1,Add device

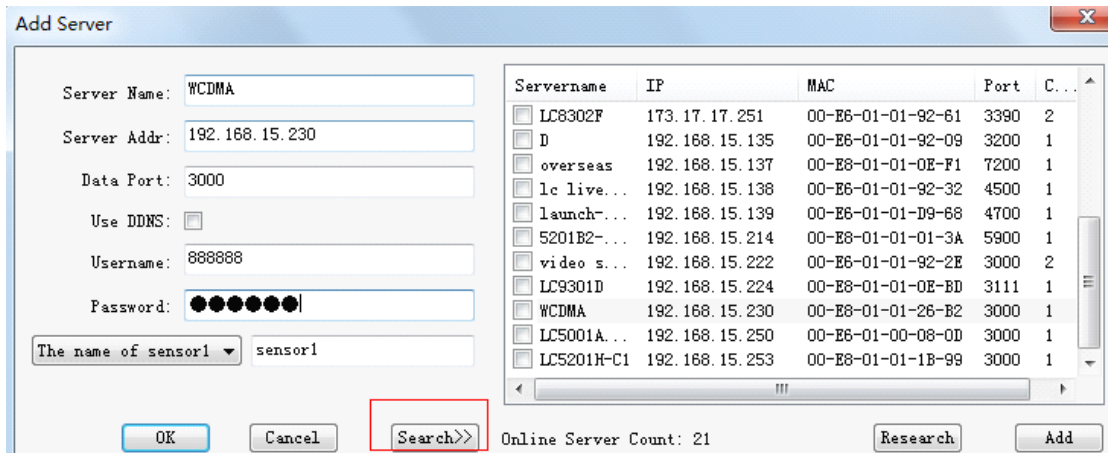
“option”----“server management”



“Add server”



Search and choose device, click “OK”

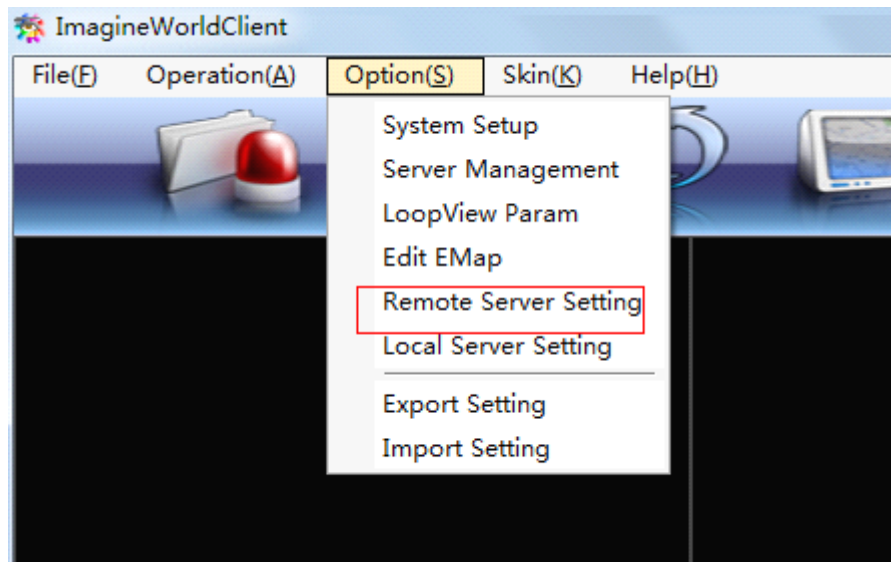


Double click or drag the device icon to the channel.



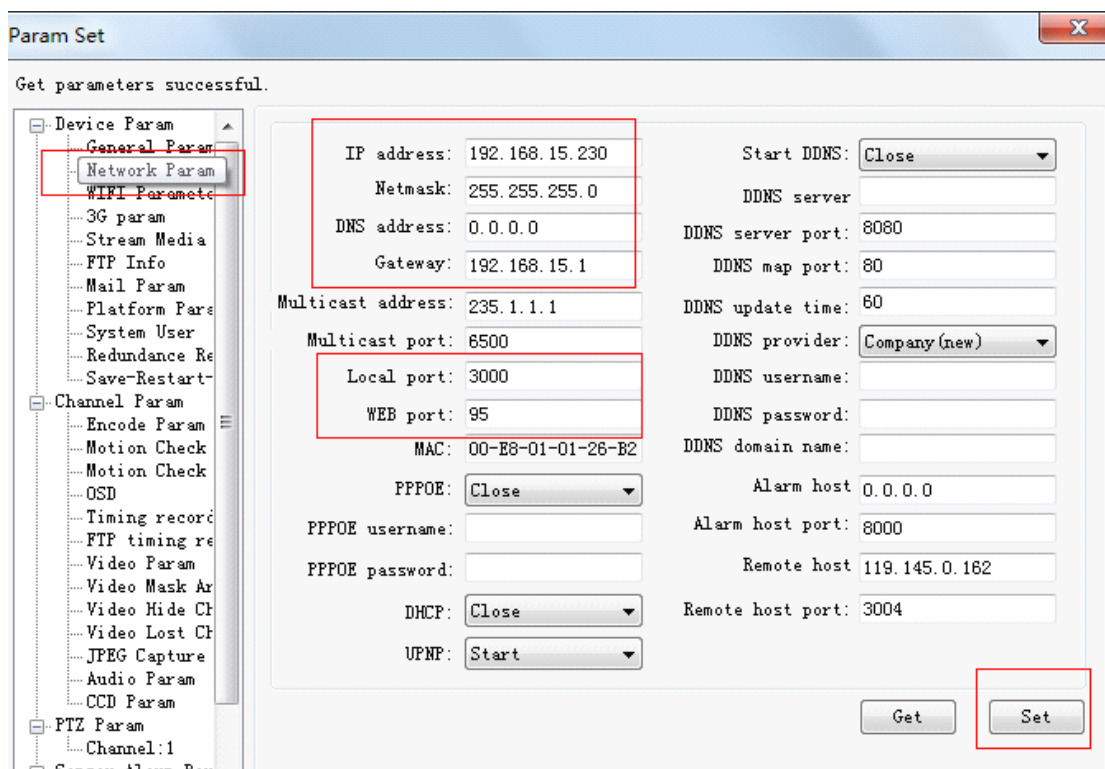
## 2,Modify network parameter of device

“option”—“remote server setting”



“device param”---“network param”

Modify the parameter you want,, click “set”



“save-restart-update”—“save param”----“restart”

