

1) When IP camera/Network video server detect: Video lost, motion detection, external input, it will send alarm to email

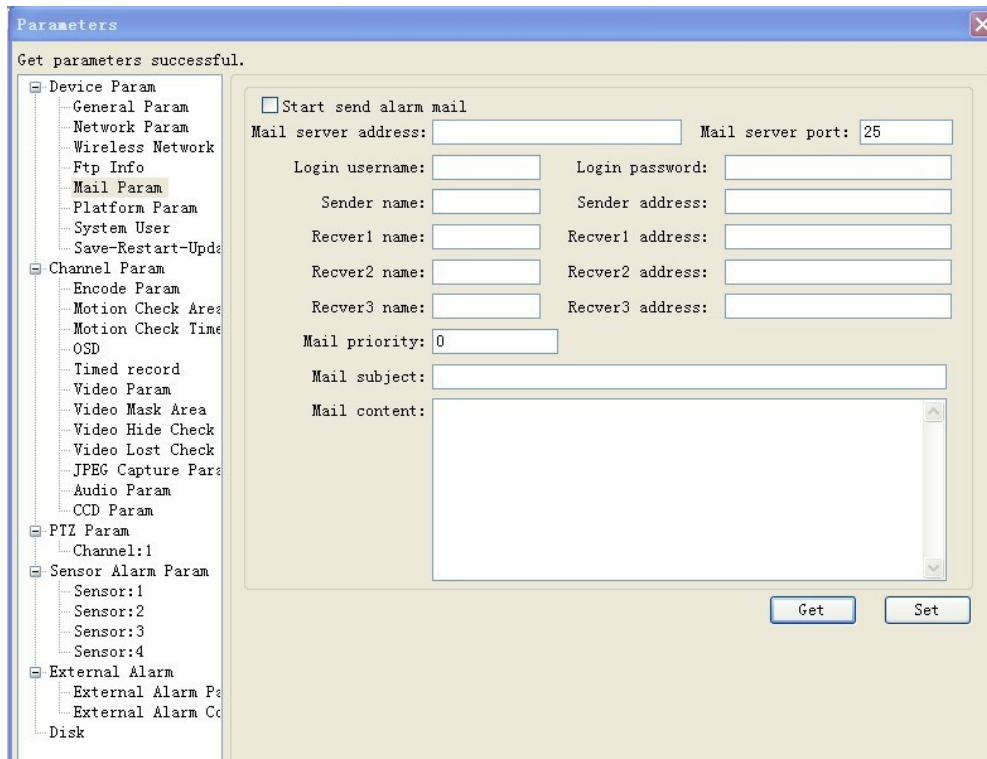
If you request the camera/Network video server sending alarm to email anytime when alarm was triggered, no matter your software “ImageclientClient” works or no

Please set the email setting here

ImageWorldClient—optional--Remote server setting



Then click “Mail parm”



**Our Alarm Email only supply SMTP format**

**Email Server Address is request**

**Email Server Port is request**

**Login Username is request**

**Login Password is request**

**Or you can set the email setting on web browser**

**Web browser--settings--Alarm Parameters--Email Alarm Settings**

Real-time    Replay    Settings

Basic parameters    Network Parameters    Channels Parameters    **Alarm Parameters**    Server storage

▼ Sensor Detection Schedule Settings  
 ▼ Motion Detection Area Settings  
 ▼ Motion Detection Schedule Settings  
 ▼ Email Alarm Settings

Send Email if there are alarm:	<input type="text" value="On"/>	Priority:	<input type="text" value="0"/>
User name:	<input type="text"/>	Password:	<input type="text"/>
Mail server IP:	<input type="text"/>	Mail server port:	<input type="text" value="25"/>
Sender's name:	<input type="text"/>	Sender's email:	<input type="text"/>
Receiver's name 1:	<input type="text"/>	Receiver's email 1:	<input type="text"/>
Receiver's name 2:	<input type="text"/>	Receiver's email 2:	<input type="text"/>
Receiver's name 3:	<input type="text"/>	Receiver's email 3:	<input type="text"/>

**2) If you request sending alarm to email base on your software—ImageWorldClient , if it working, send alarm ,If doesn't work, stop sending**

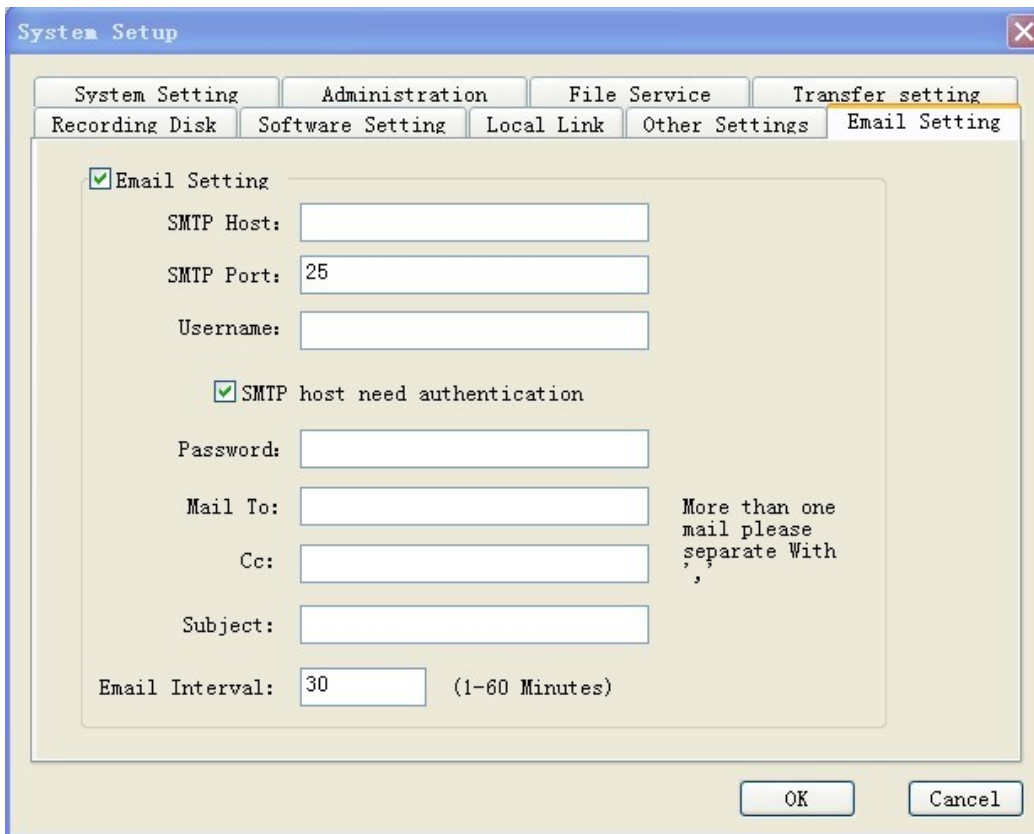
**Please set it here**

### **Email Settings**

**ImageworldClient—Option—system setup**



Then Click “Email Setting”, you will see this picture



**SMTP Host: Email Server Address**

**SMTP Port: 25** (Because our Email alarm only support SMTP format, the SMTP Server port is 25)

**username: login name (Email)**

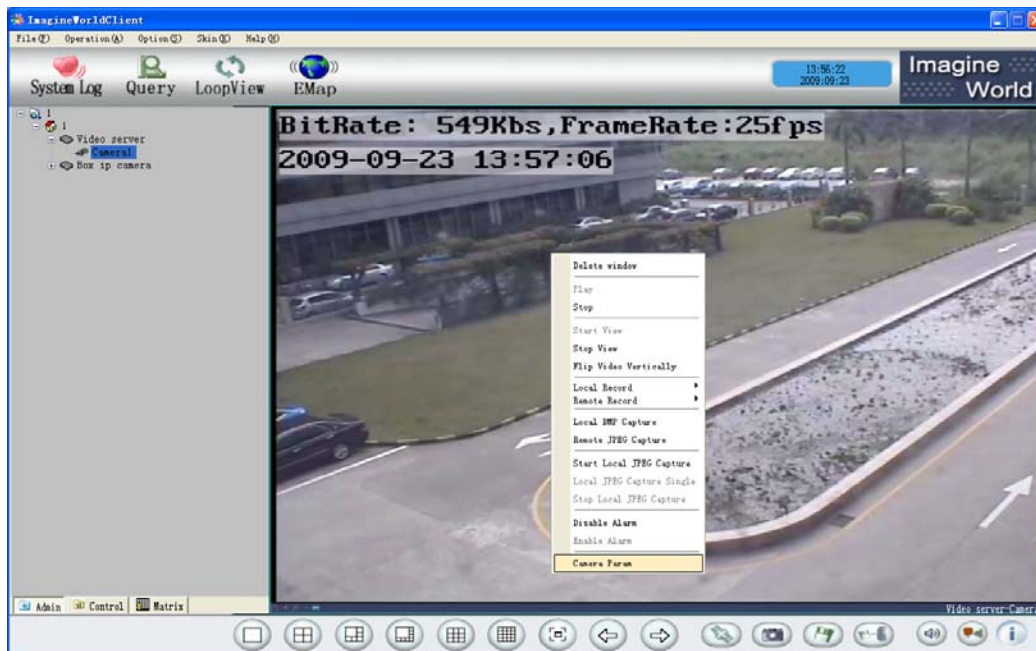
**password: login password**

**Email to: receiver**

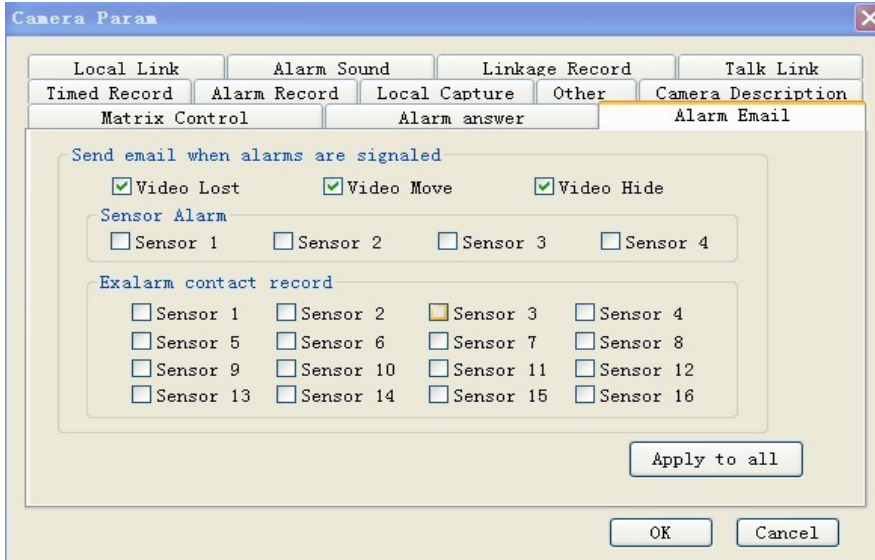
**Email interval: Send alarm picture interval (1~60min)**

### Alarm type setting

#### Right button click video



Click “Camera parm”, then click “alarm email”, you will see



**Finish these setting, the alarm will send to your email**